



TRIO
ARCHITECTURE
INTERIOR DESIGN
ENGINEERING



BELLARocca

RESIDENTIAL INTERIOR
PRIVATE RESIDENCE

INDEPENDENT

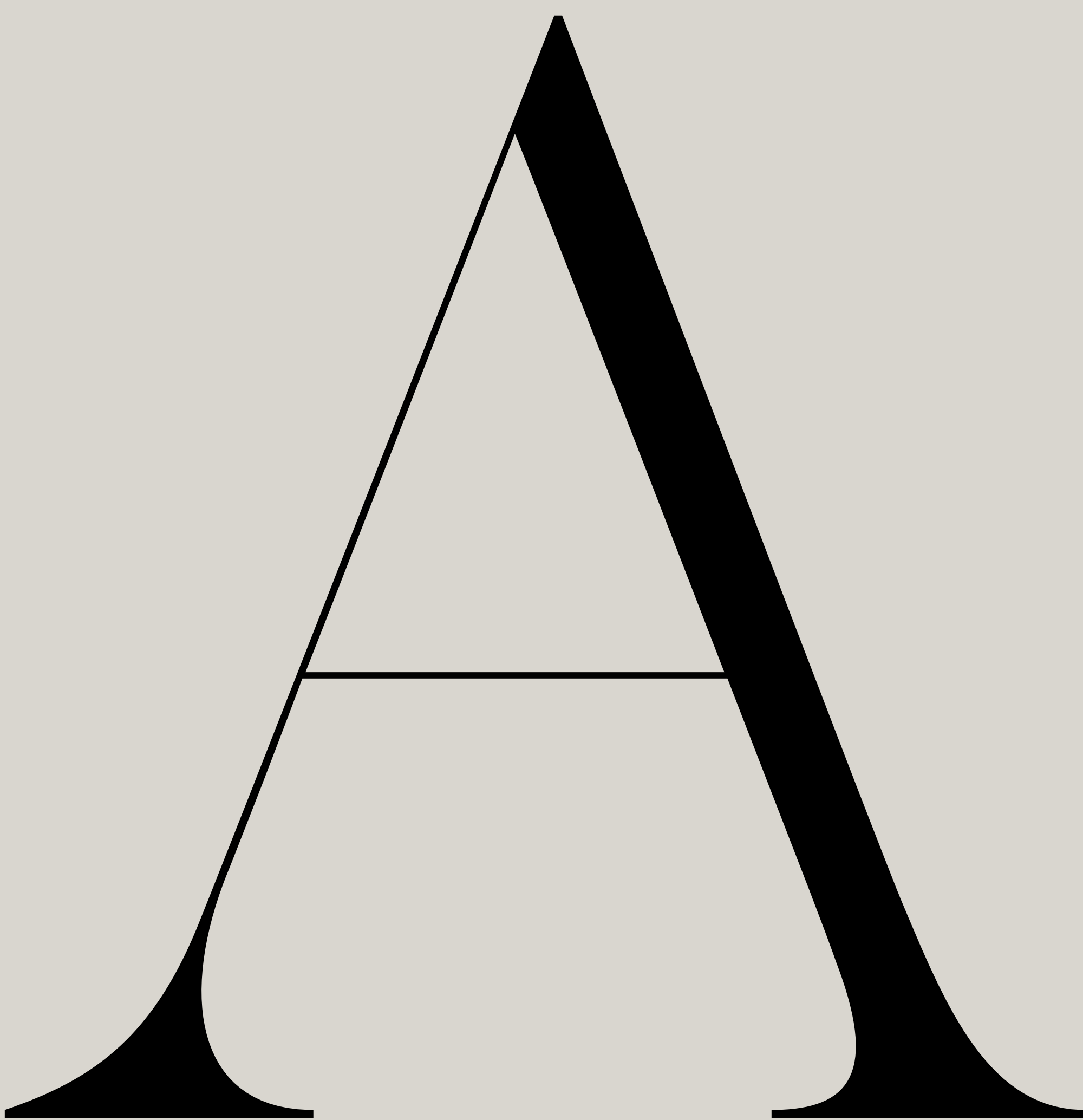


A. OVERVIEW

1A. THE BRIEF	04
1B. THE BUDGET	06
1C. SPACE TO BE STYLED	10
2. LAYOUT OPTIONS	20

B. COMPLETED DESIGN

1. FINAL DESIGN	38
2. IMPORTANT ELEMENTS	116
3. UTILIZATION OF BUDGET	130
4. SAMPLEBOARDS	132
5. PORTFOLIO OF PHOTOS	136



Overview

01.A

THE BRIEF

The vision of two partners coming together to manifest their dream of owning a luxury holiday rental in the serene East-End of the Cayman Islands is a testament to shared dreams and a profound love for exceptional living. Their journey commenced in late 2015, seizing the opportunity to acquire an oceanfront plot nestled atop one of the island's rare elevated vantage points.

Mike Stroh, a seasoned Director of Architecture, and Carolina Hane, an accomplished Director of Interior Design from Trio Architecture, took the helm of the design process, granting them creative autonomy. With an expansive canvas stretching to the ocean's horizon, they embarked on a journey of imagination, free from conventional constraints.

Inspired by the rugged beauty of the Caymanian terrain, Mike envisioned a design seamlessly harmonizing with its surroundings. His concept ingeniously integrated the natural slope of the rock into the architectural form, promising a space that captivates while fostering a deep connection with nature. Thus, Bella Rocca was born—a name evoking the elegance of the Spanish language and the solidity of rock, paying homage not only to the project's defining element but also to Mike's wife, Bella.

Meanwhile, Carolina's discerning eye saw beyond the property's potential; she envisioned a sanctuary of refined luxury, poised to embrace families and intimate gatherings alike. Her vision transformed Bella Rocca into more than a holiday retreat; it became a venue for crafting cherished memories and sharing the island's splendor with kindred spirits. In her hands, every corner of the residence exuded an ambiance of opulence and warmth, ensuring that each moment within its walls would be nothing short of extraordinary.



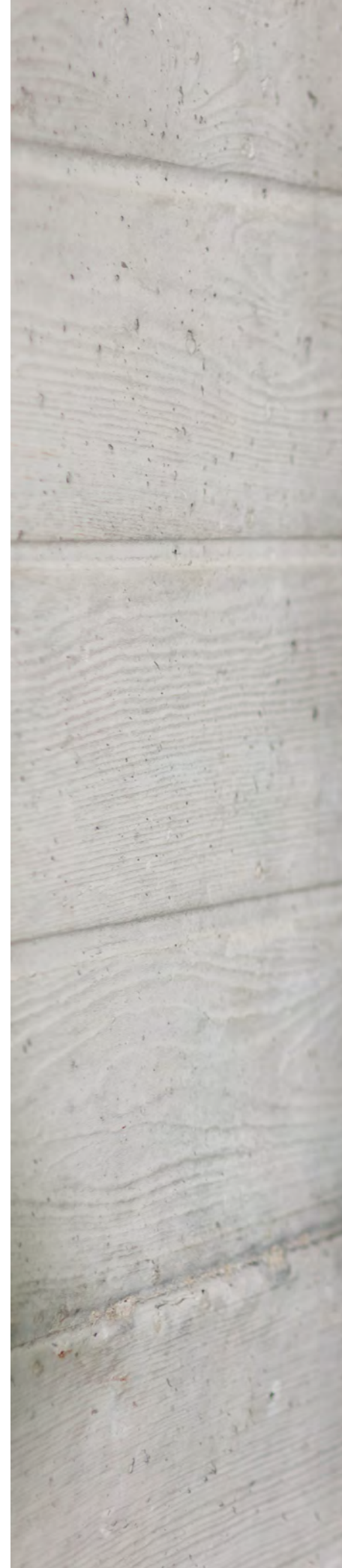
Investment

01.B

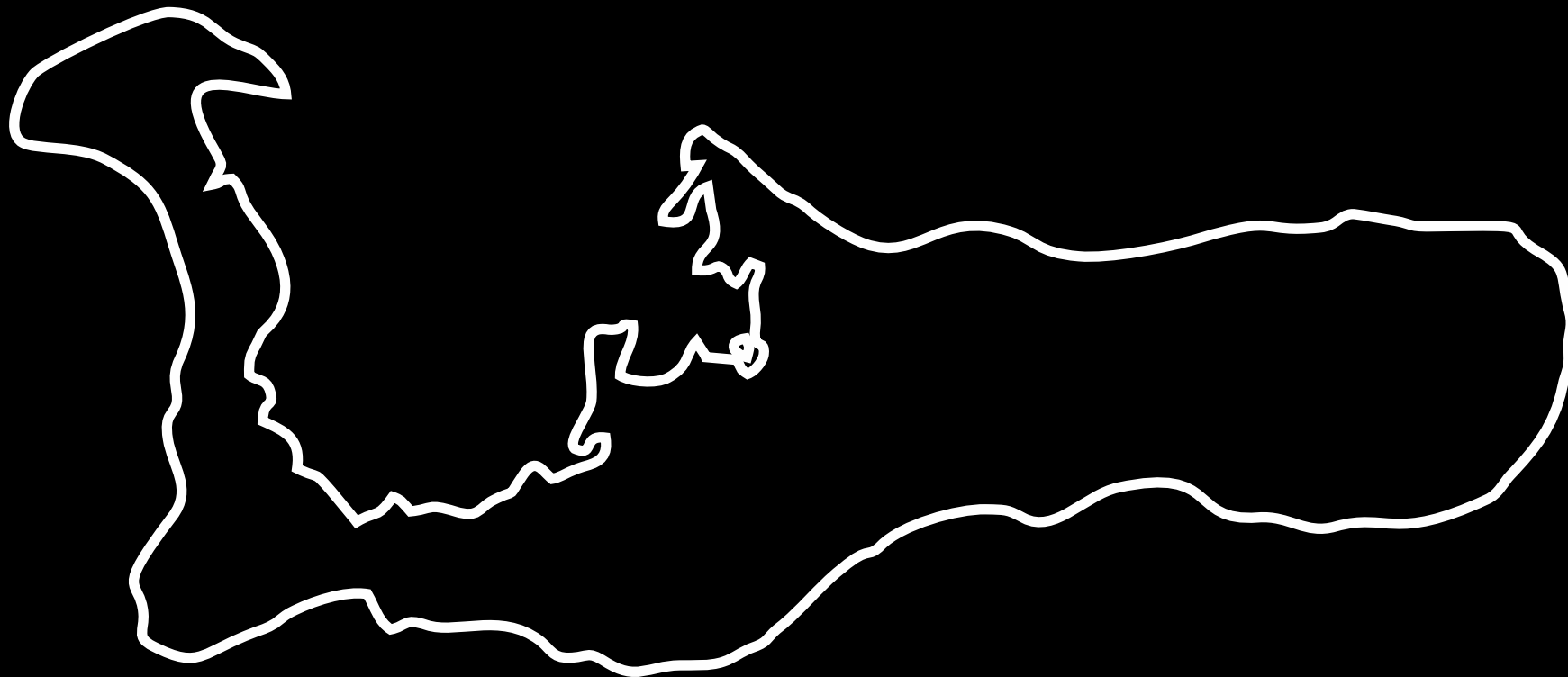
THE BUDGET

Pooling the resources of the two families provided a unique opportunity to create a truly exceptional and unparalleled property. With a project budget of 8 million pounds, agreed upon collectively, they were able to bring their vision to life while ensuring financial viability.

Drawing upon Mike and Carolina's extensive expertise in the field, they navigated the project with a focus on cost-effective solutions without compromising on design quality. Their established relationships with reputable brands and contractors allowed for competitive pricing while upholding high standards. Through their resourcefulness and meticulous attention to detail, the project was successfully completed within budget, meeting their expectations for quality and excellence.







GRAND CAYMAN
CAYMAN ISLANDS

19° 18' N | 81° 15' W

CAYMAN *Islands*

The Cayman Islands are a British Overseas Territory located in the western Caribbean Sea, encompassing three islands: Grand Cayman, Cayman Brac, and Little Cayman. Renowned for their breathtaking natural beauty, the Cayman Islands boast crystal-clear waters and pristine beaches that draw visitors from around the globe.

In recent years, the Cayman Islands have emerged as a sought-after holiday destination, attracting travelers seeking sun, sea, and relaxation. The Cayman Islands' warm and inviting climate makes them an idyllic escape year-round, providing ample opportunities for outdoor recreation and leisure activities. Whether it's lounging on the beach, indulging in water sports, or sampling the local cuisine at charming seaside eateries, there's something for everyone to enjoy in this tropical paradise.

In addition to its appeal as a holiday destination, the Cayman Islands offer a stable and secure environment for individuals and businesses alike. As a British Overseas Territory, the islands provide a robust legal and regulatory framework, fostering a thriving financial sector that attracts professionals from finance, law, and other professional fields.

Overall, the Cayman Islands offer an ideal combination of business and pleasure, making them an increasingly popular destination for those seeking a high quality of life in a stunning tropical setting. With its unparalleled natural beauty, vibrant culture, and warm hospitality, the Cayman Islands beckon visitors to discover the enchanting allure of this Caribbean gem.





ZONING
diagram

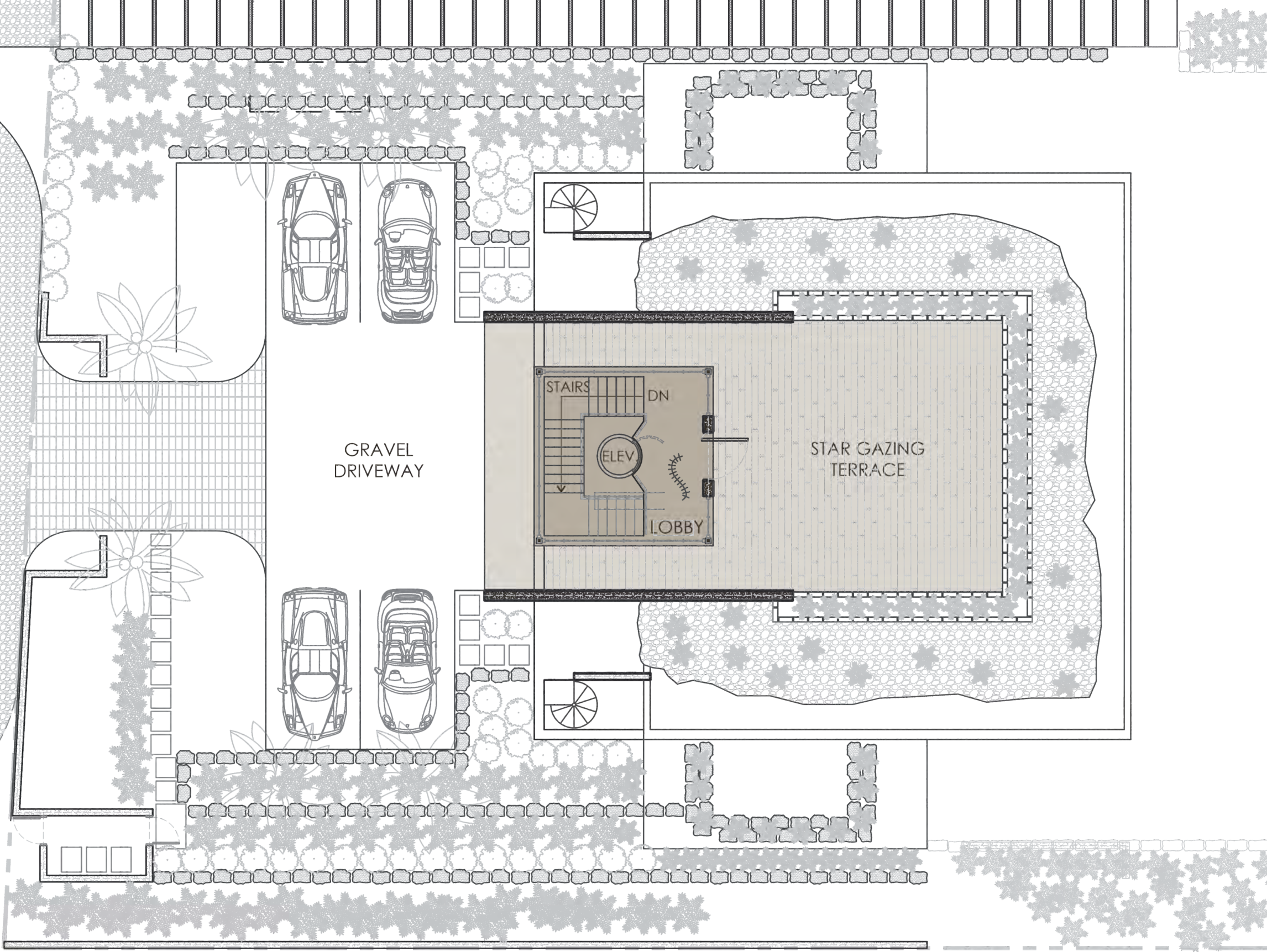
STAR GAZING
TERRACE

LOBBY

01.C SPACE TO BE STYLED

At Trio Architecture, we have both an architecture and interior design division, which enables us as interior designers to participate in the design process from the outset. This involvement allows us to contribute to the planning of the space's intended functionality and the ambiance we seek to create within it.

The home spans over three levels and is seamlessly integrated into the surrounding rocky terrain, with the entrance located on the top floor. The middle level serves as the private retreat, featuring four spacious bedrooms with en-suite bathrooms as well as two additional guest bedrooms. The ground level is dedicated to the open-plan living and entertainment space, comprising a generous kitchen, dining and lounge area that leads out to an expansive outdoor entertainment zone.



ROOFTOP
PLAN

ZONING
diagram

PRIMARY
BEDROOMS

KIDS
BEDROOMS

BATHROOMS

CIRCULATION
SPACE





MID LEVEL
PLAN



BOTTOM LEVEL PLAN

ZONING *diagram*



CIRCULATION
SPACE



OPEN LIVING
& KITCHEN



LAUNDRY



HOME
THEATER



KIDS
BEDROOM



BATHROOMS



OUTDOOR
PATIO



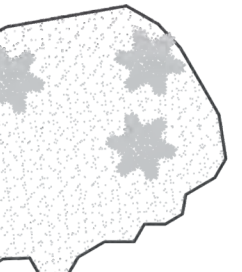
POOL



LAWN



BEACH



DRIVEWAY

STAIRS

LOBBY

STARGAZING TERRACE

OVERVIEW

STAIRS

FOYER

W.I.C.

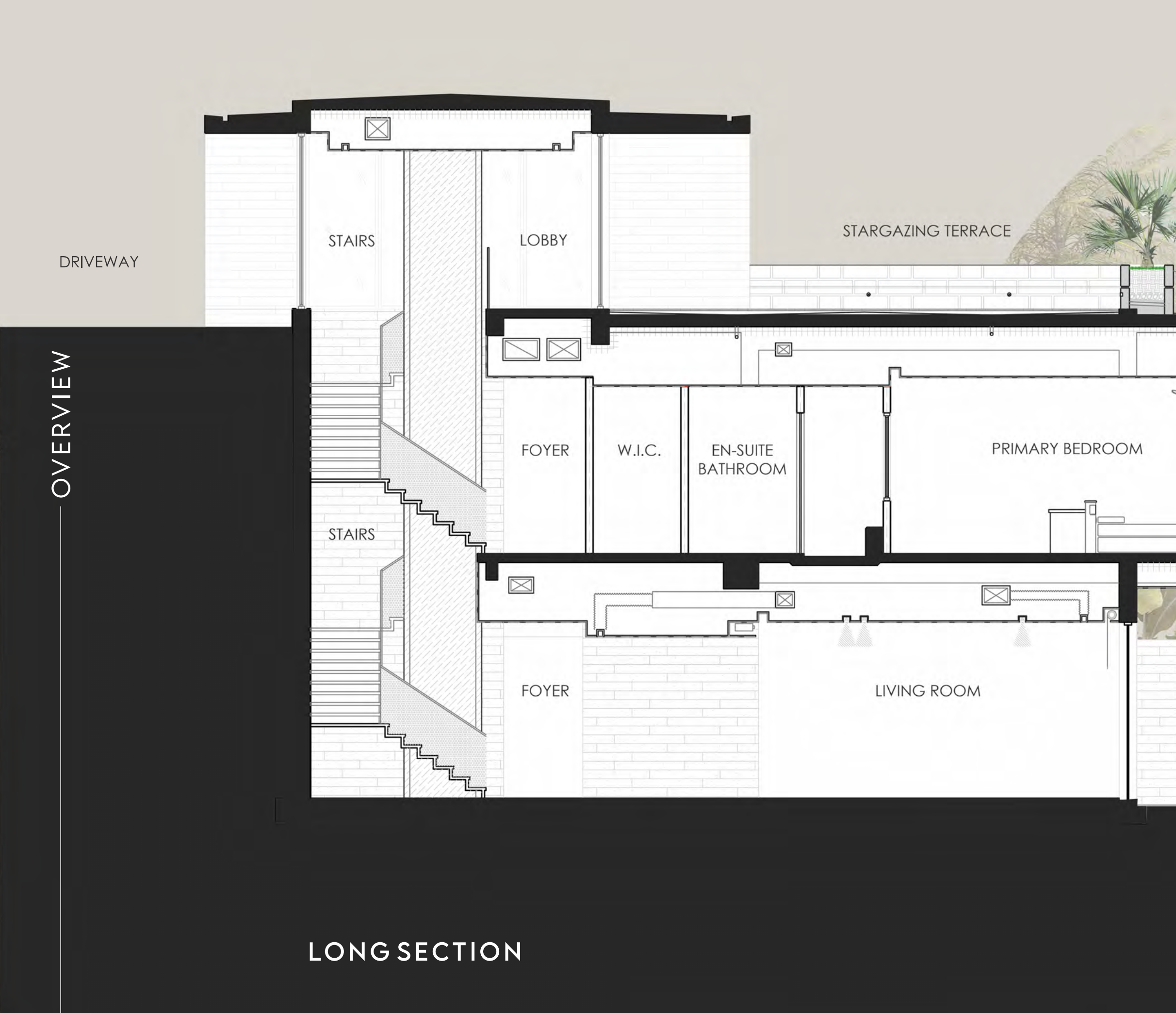
EN-SUITE
BATHROOM

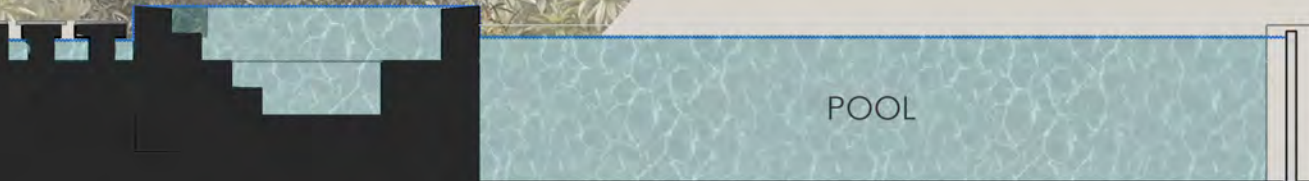
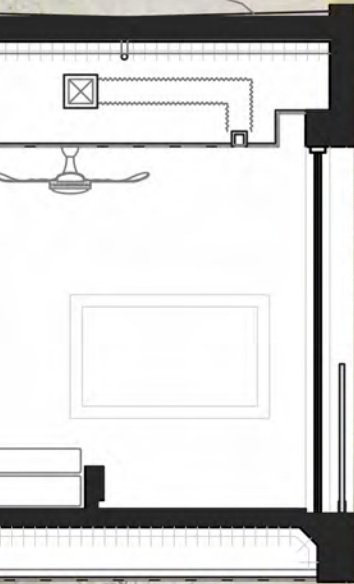
PRIMARY BEDROOM

FOYER

LIVING ROOM

LONG SECTION







ENTRANCE

PRIMARY BEDROOM

PRIMARY BEDROOM

PRIMARY BEDROOM

PRIMARY BEDROOM

COVERED TERRACE

KITCHEN

LIVING ROOM

DINING ROOM

COVERED TERRACE

CROSS SECTION



2.

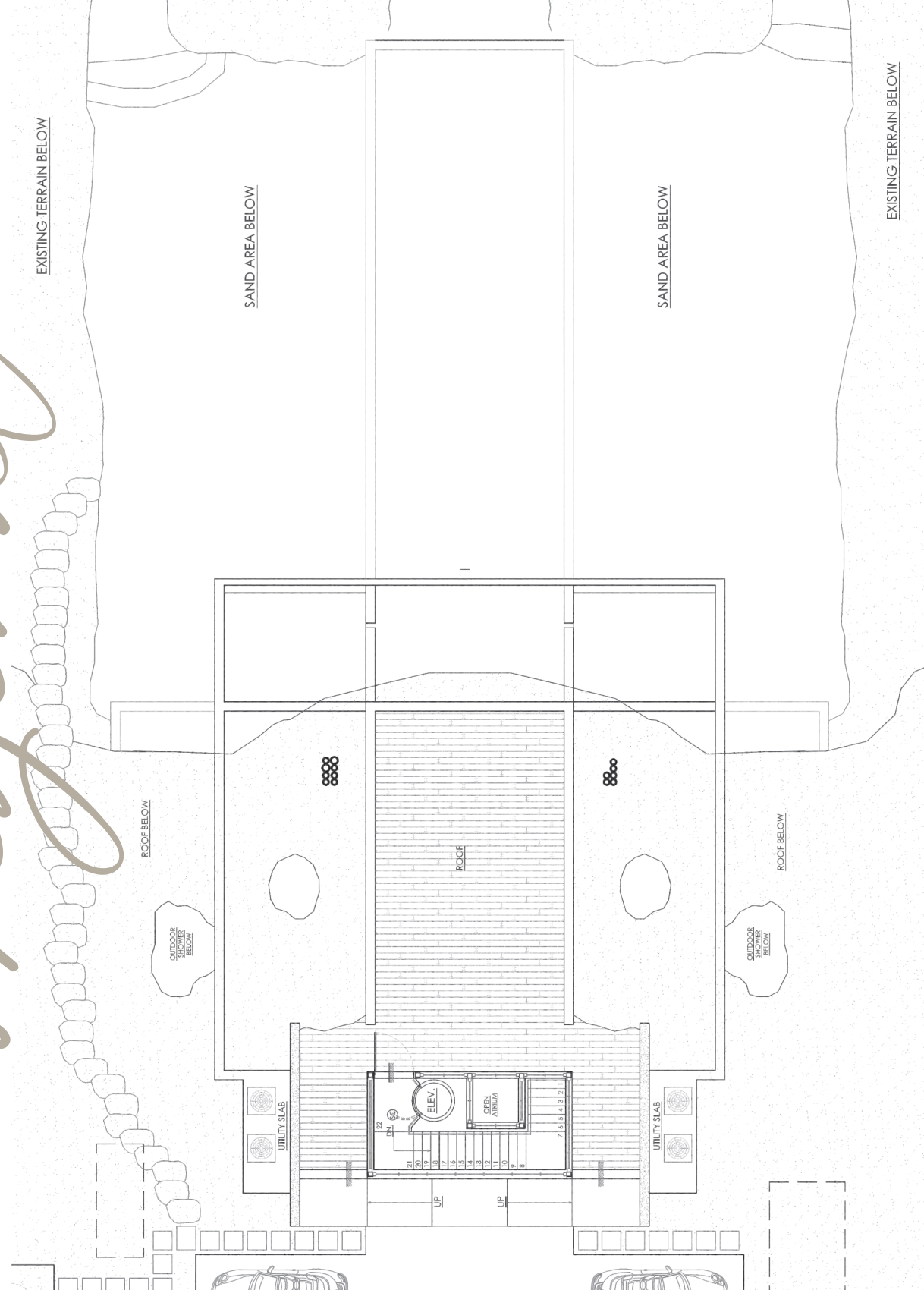
DESIGN LAYOUTS

As the home was meticulously crafted by the two owners, the traditional process of developing distinct design layouts was bypassed, as they intricately tailored their own unique design brief. Nevertheless, the evolution of the home's design journey saw significant transformations from its initial conception.

From the outset, the architectural layout was conceived with a keen awareness of its surroundings, with Mike steering clear of imposing structures that would disrupt the natural harmony of the neighborhood. Thus, the street-facing facade was envisioned as a modest glass box, cleverly concealing the grandeur that unfolds within as one traverses deeper into the building.

Originally, the layout catered to two fully autonomous levels, each equipped with bedrooms, kitchens, and lounges, catering to the needs of two families holidaying together while still affording them privacy. However, as the vision evolved to accommodate the home's potential as a rental venue for events, a strategic adjustment was made. Consolidating the sleeping quarters onto one level and dedicating another solely to entertainment spaces streamlined the functionality of the home, enhancing its appeal as a versatile and captivating venue for gatherings and celebrations.

original



TOP
LEVEL

EXISTING TERRAIN BELOW

SAND AREA BELOW

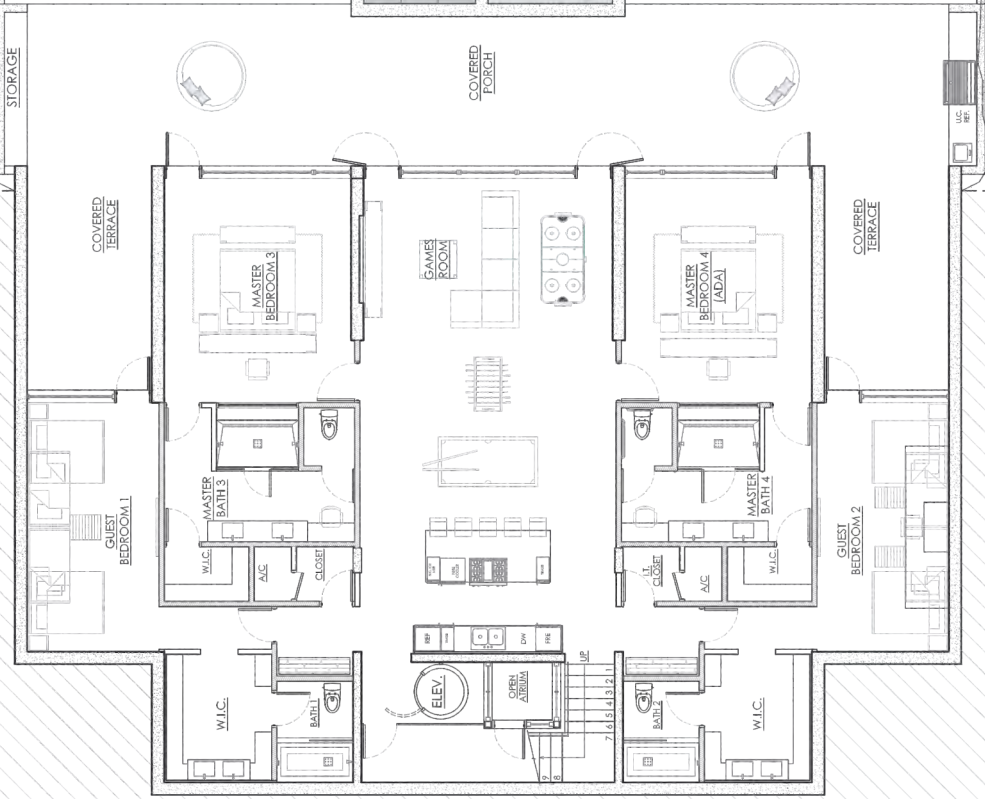
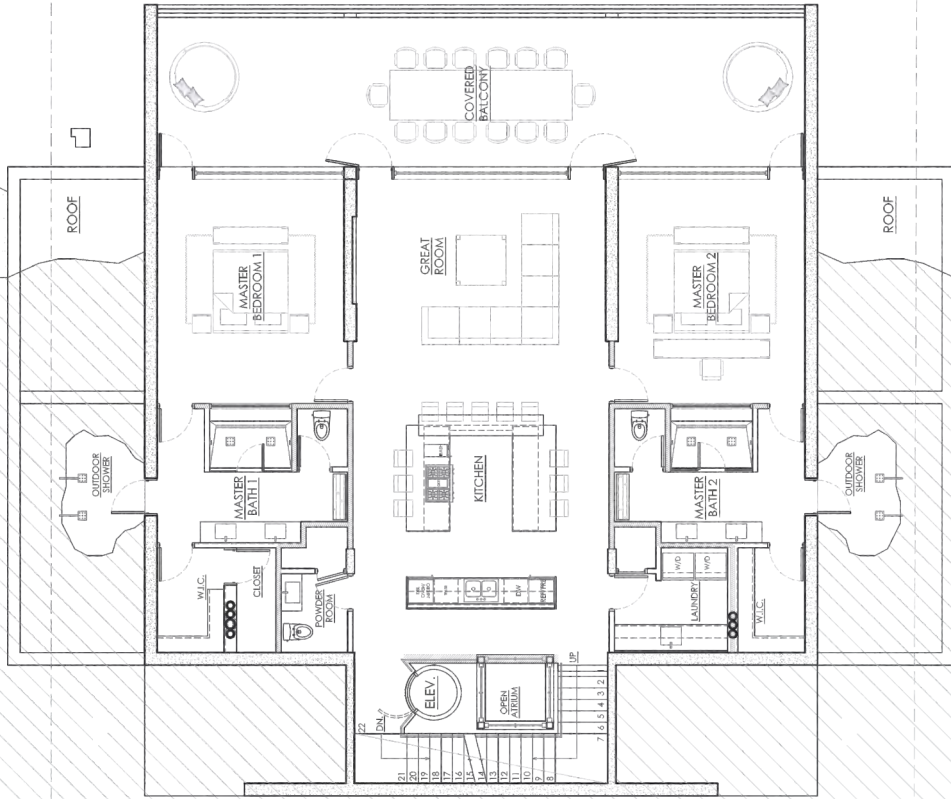
SAND AREA BELOW

EXISTING TERRAIN BELOW

EXISTING TERRAIN

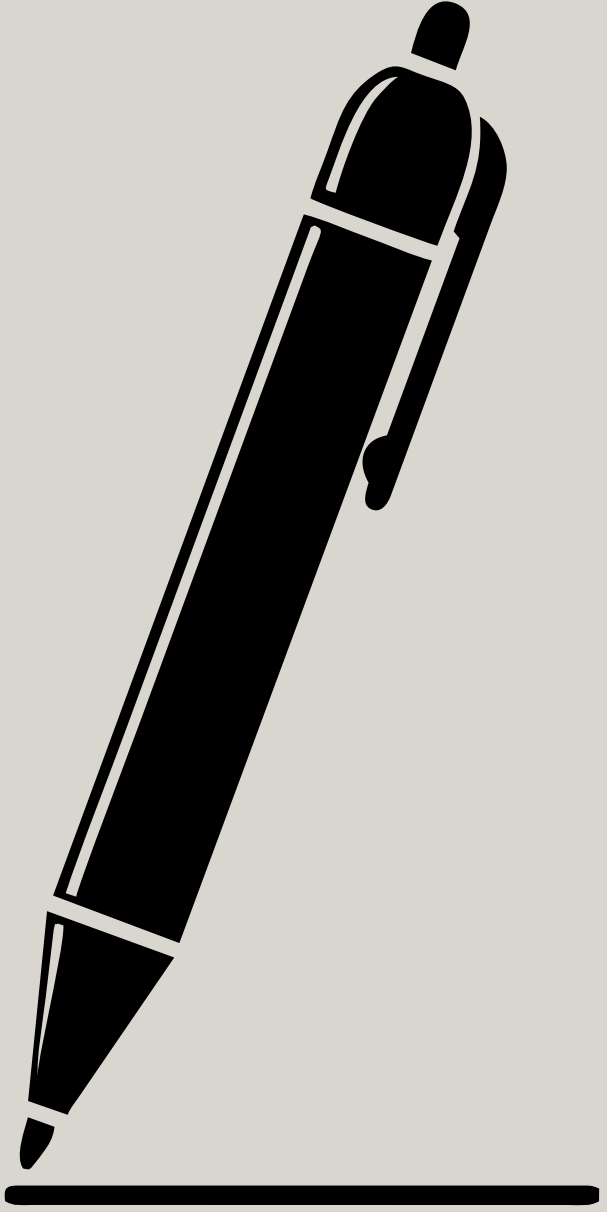
SAND AREA

EXISTING TERRAIN



MID
LEVEL

BOTTOM
LEVEL

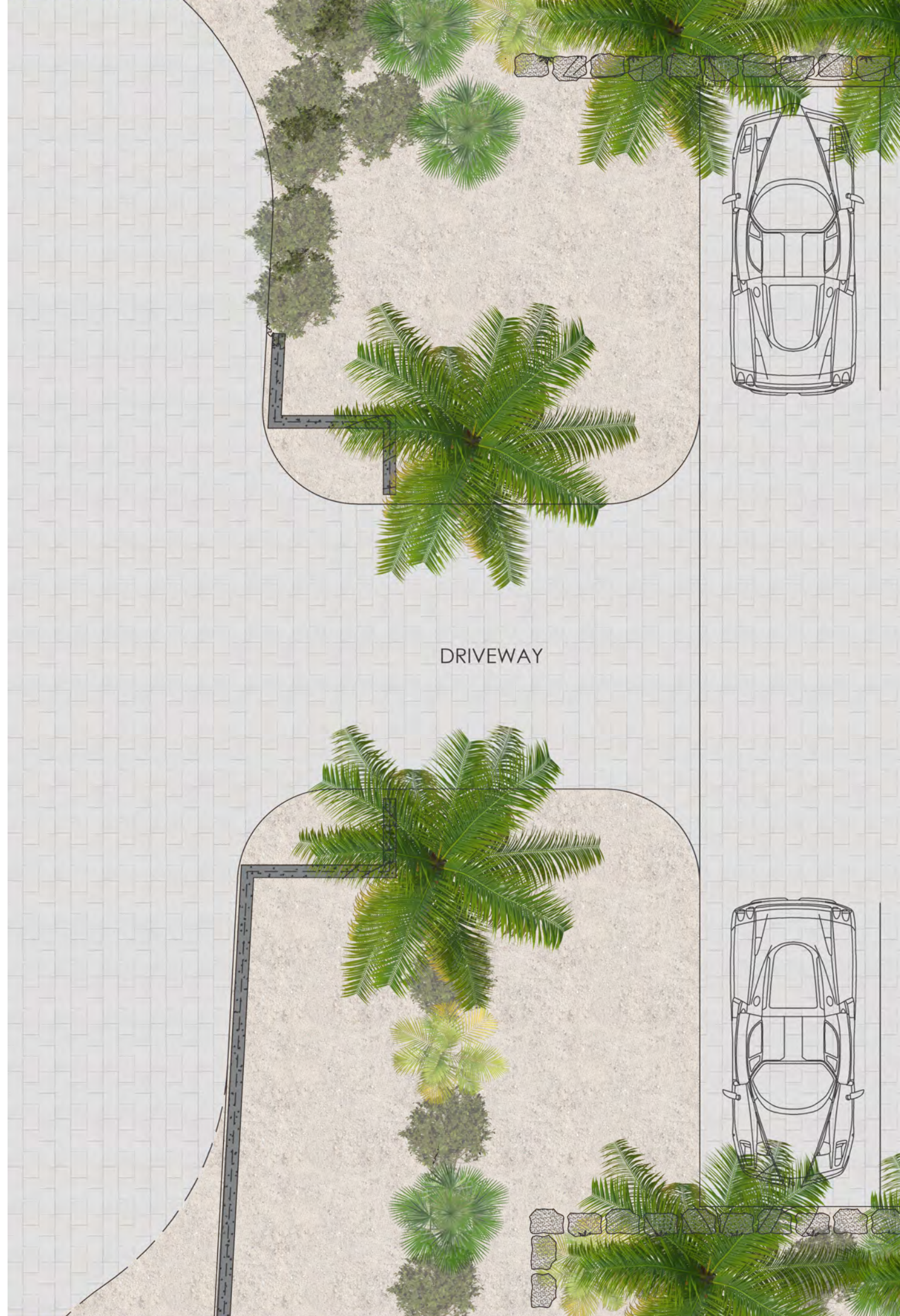


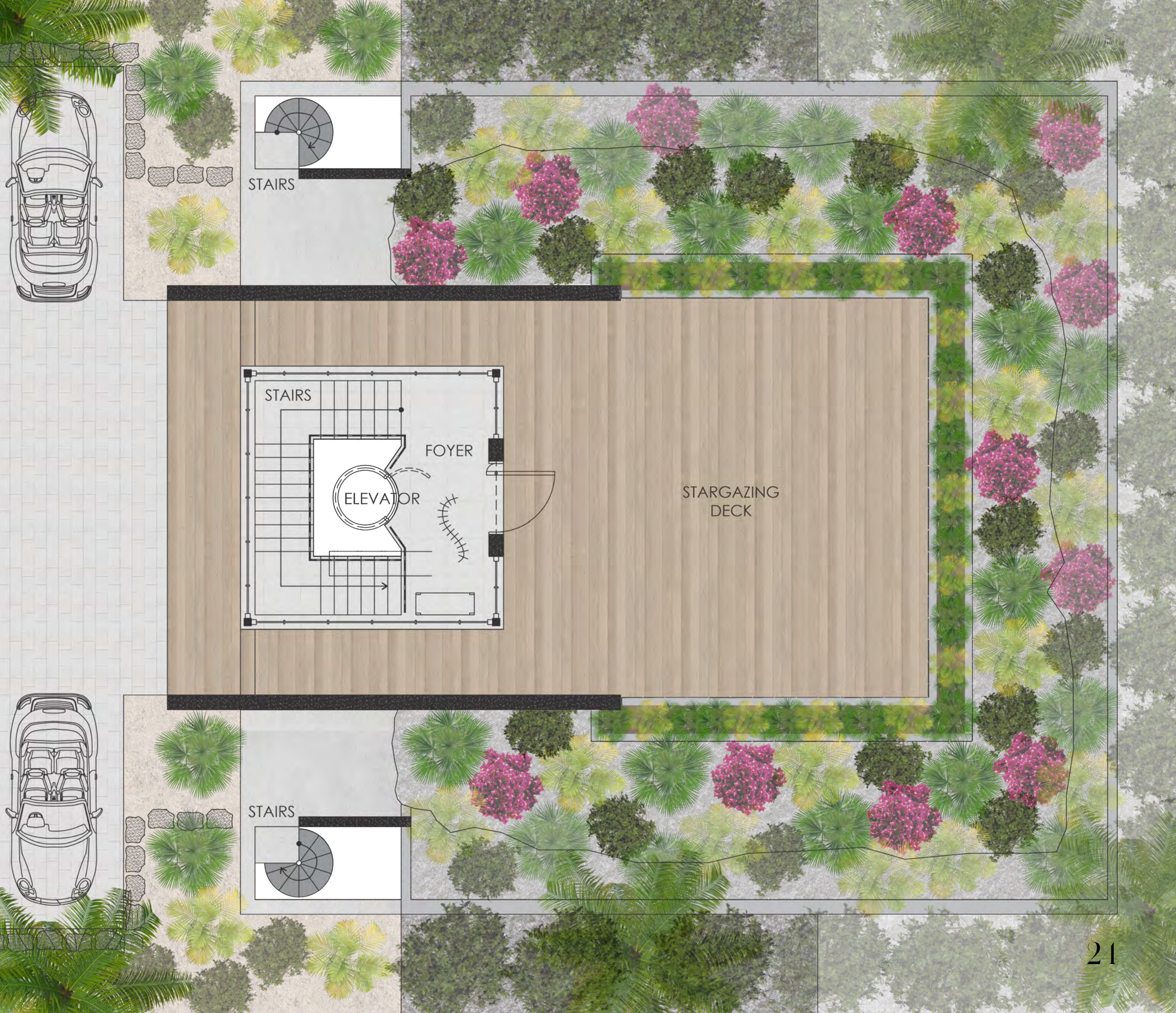
CHOSEN
design

TOP *level*

The home's entrance, located at the top level and level to the street, was deliberately positioned on the rear side to showcase the breathtaking ocean vista. This intentional placement encourages visitors to meander around the residence, immersing themselves in the panoramic beauty that surrounds it.

At the top floor, a deliberate sense of minimalism prevails, with only a sleek glass enclosure enveloping the entrance to the stairs and elevator, which transport guests to the main living areas below. Capitalizing on the unparalleled views from this elevated vantage point, a spacious open viewing deck was conceived, offering an expansive platform for reveling in the coastal splendor. This versatile deck doubles as a picturesque setting for gatherings and events, where guests can savor the serene ambiance while basking in the natural grandeur of their surroundings.





STAIRS

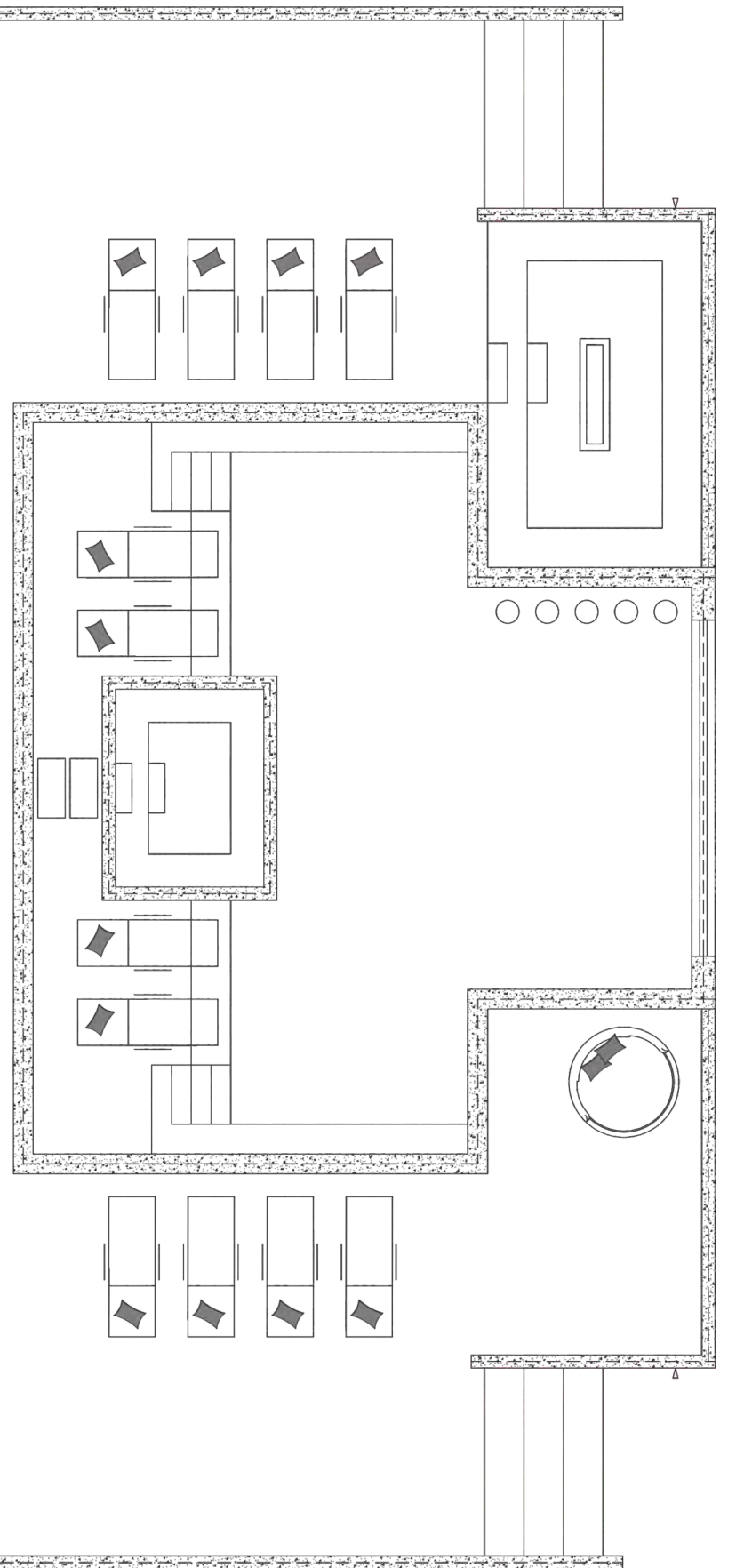
STAIRS

FOYER

ELEVATOR

STARGAZING DECK

STAIRS

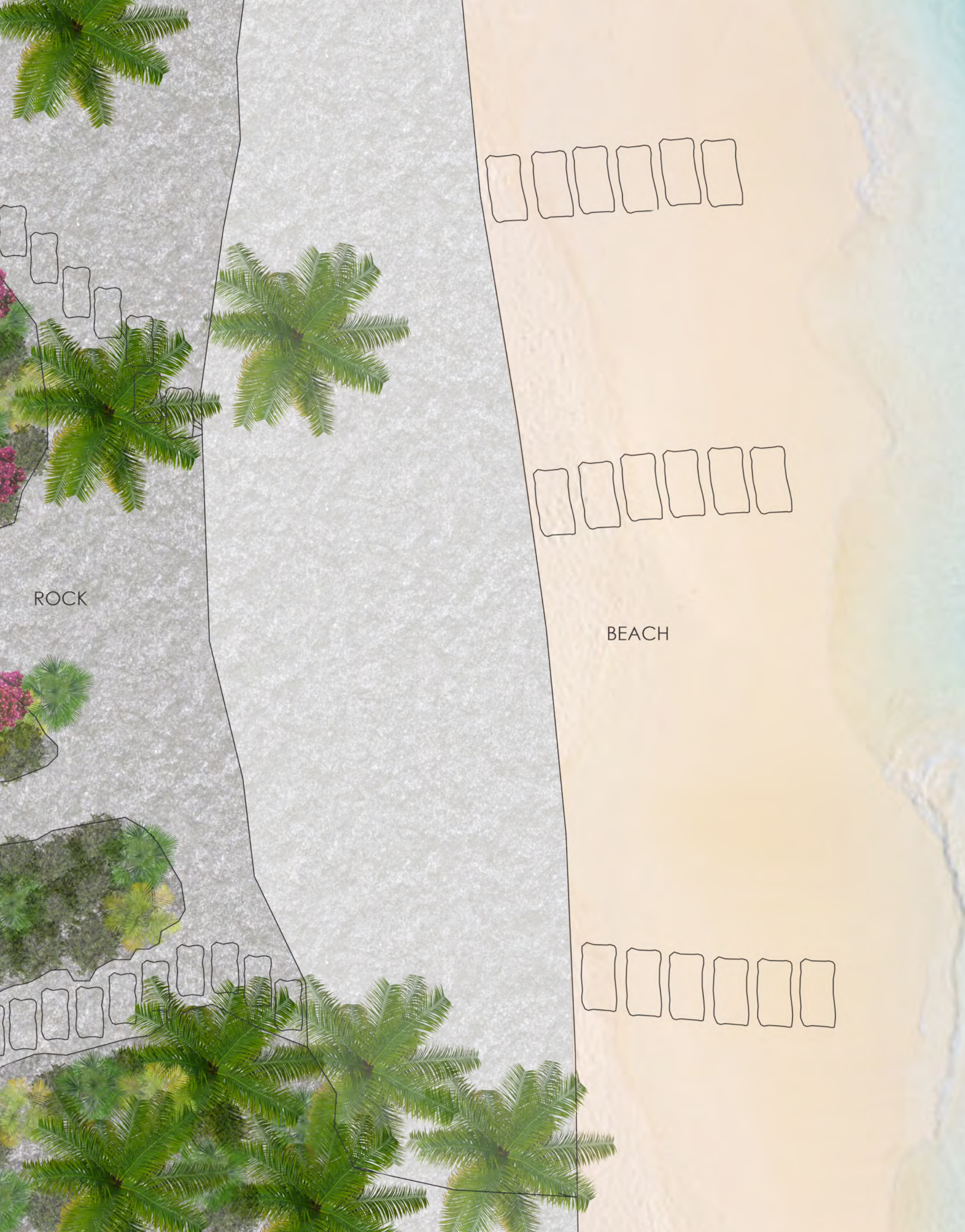


MIDDLE *level*

Given the home's purpose of accommodating multiple families, prioritizing luxurious primary bedrooms and bathrooms for each couple was paramount. This strategic decision not only caters to the comfort of individual occupants but also renders the property an ideal rental option for larger groups or special events. With meticulous attention to detail, the bedrooms were meticulously crafted to evoke a refined hotel-like ambiance, replete with opulent amenities that elevate the holiday experience for guests. Complementing the primary bedrooms, this level also features two guest bedrooms, each furnished with two single beds, perfectly suited for children or accompanying staff, ensuring a comprehensive and inclusive retreat experience for all occupants.







BOTTOM *Level*

The lower level of the residence is thoughtfully curated for entertainment, offering a sprawling and airy living space that caters to the needs of large families and events alike. This welcoming expanse comprises a generous living, dining, and kitchen area, seamlessly integrating with the outdoors through a summer kitchen, dining, and living space. Outside, an expansive pool, spa, and sunken fire pit beckon with mesmerizing ocean vistas, providing an idyllic backdrop for gatherings and events. Moreover, the residence offers convenient beach access and boasts prime snorkeling spots just moments away, ensuring a seamless blend of luxury, leisure, and coastal charm for all who call this retreat home.

IB

COMPLETED
design

DESIGN



rock cave





DESIGN CONCEPT

The concept behind this home was sparked by the distinctive nature of the site, which required carving into the rock to accommodate the structure—a nod to the concept of a cave. Drawing inspiration from nature's handiwork, our vision was to fashion an interior space that resonates with the organic essence of a cave, immersing inhabitants in the embrace of the surrounding landscape. With a focus on harmony, the design aspires to seamlessly merge the interior with the breathtaking beauty of the surroundings, crafting a sanctuary that fosters a profound connection to the natural world.



DESIGN





MOOD.

Our goal was to cultivate a unified aesthetic that harmonizes with the unobtrusive exterior of the residence while exuding a laid-back Caribbean vibe. To achieve this, we embraced a neutral island aesthetic, infusing the space with an abundance of natural textures and materials to heighten the cave-inspired ambiance. This design approach fosters a seamless fusion of elements that effortlessly meld with the surrounding environment, imparting a tranquil and welcoming atmosphere that encapsulates the essence of the Caribbean lifestyle.

DESIGN

WABISABI

JAPANESE PRINCIPAL

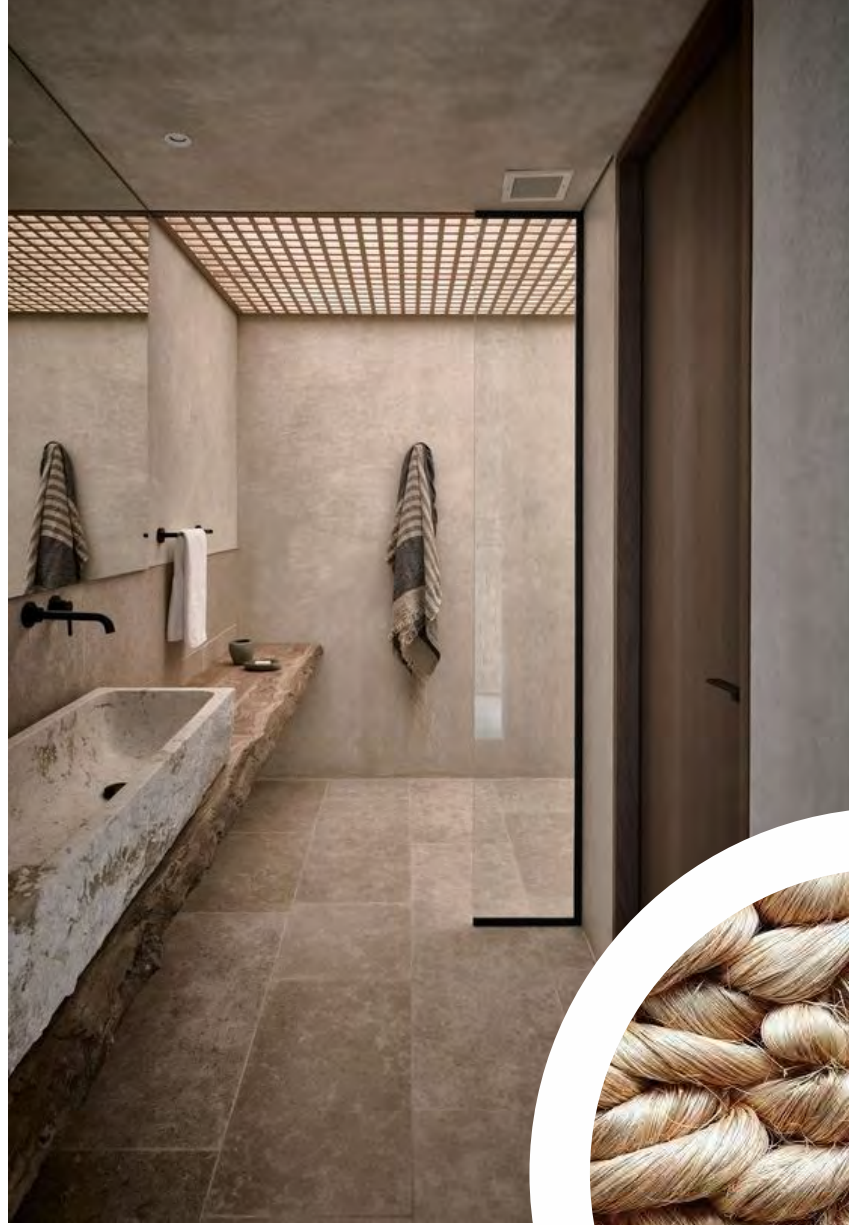
An aesthetic or world view characterized by finding beauty in imperfection, impermanence, or simplicity

CARIBBEAN

DESIGN

Caribbean design reassembles diverse indigenous, African and European elements to suit a tropical environment.





DESIGN





01.

FINAL DESIGN

In the following section of the book, we delve into a comprehensive exploration of the final design, delving into every aspect from the indoor to the outdoor spaces. Each element is meticulously showcased, offering a detailed examination of the thoughtfully curated interior and exterior features that define this extraordinary residence.

DESIGN



ENTRANCE & APPROACH

As previously detailed in the design layout, the approach to the home is characterized by its modest and minimalist aesthetic. During the site excavation process, a unique stone native to the Cayman Islands, known as Caymanite, was carefully harvested. This distinctive stone was repurposed to create boundary walls and stone cladding, infusing the entrance with its captivating allure.

The intricate layers of Caymanite stone serve as the initial greeting to visitors, offering a tantalizing preview of the architectural splendor that awaits within. With its natural beauty and timeless elegance, the Caymanite stone boundary walls set the stage for the immersive experience that unfolds as one traverses deeper into the property.





SIGNATURE SMELL

Carolina, in addition to her role as a designer, is also the founder of a fragrance brand specializing in scent machines, known as Casa. For Bella Rocca, she has selected "Terra" as the signature scent. A seductive and sensual fragrance with a combination of smokey black tea, fresh bergamot and a spicy undertone of bay leaves. This captivating fragrance permeates the entire space through the air conditioning system, ensuring that every corner of the home is enveloped in its subtle, captivating aroma. As guests step into the residence, they are greeted by the delicate and inviting scent, adding an extra layer of luxury and ambiance to their experience.



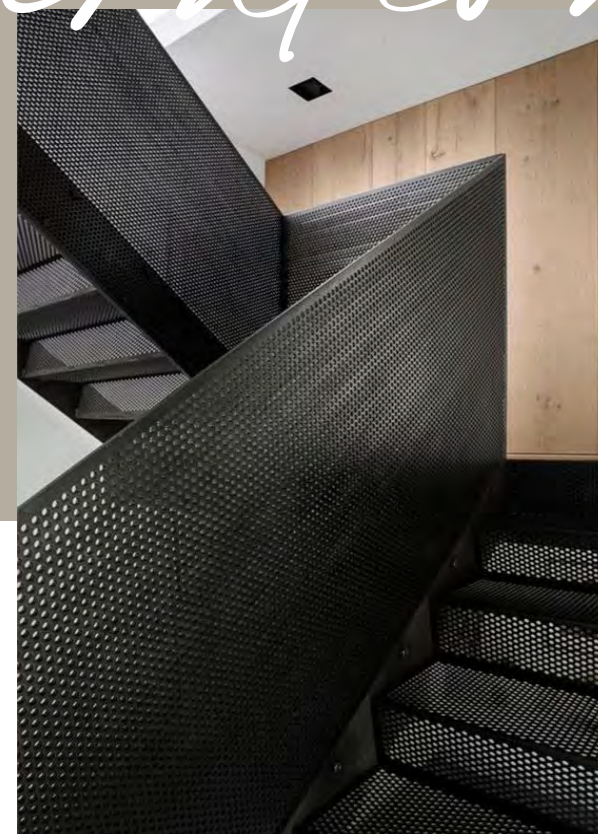
C A S A
by Carolina Hané

*open me
to smell*

FRAGRANCE



inspiration



DESIGN

STAIRCASE DESIGN

At the heart of the home lies its pièce de résistance: a meticulously crafted staircase that gracefully winds through the building's core. This distinctive feature, enveloping a sleek glass elevator, spans three stories, serving as a captivating focal point of the interior design.

Upon entering the home, guests are welcomed into a luminous space that seamlessly transitions as they descend the striking black punched metal staircase. The walls flanking the staircase are adorned with off-shutter concrete, enticing visitors to experience the tactile rawness of the textured surface.

At the base of the staircase, a tranquil rock garden beckons, seamlessly integrating the natural world into the interior space. This thoughtfully curated feature pays homage to the surrounding rocky landscape, further enhancing the cave-like ambiance of the home while infusing the space with a sense of serene tranquility.

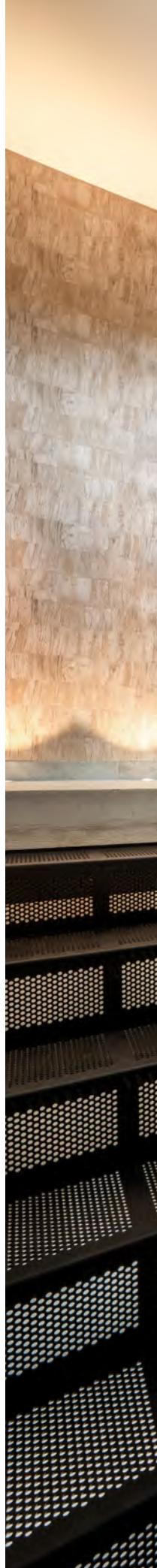
STAIRCASE SECTION





DESIGN

SCULPTURAL







DESIGN

VERTICAL CIRCULATION



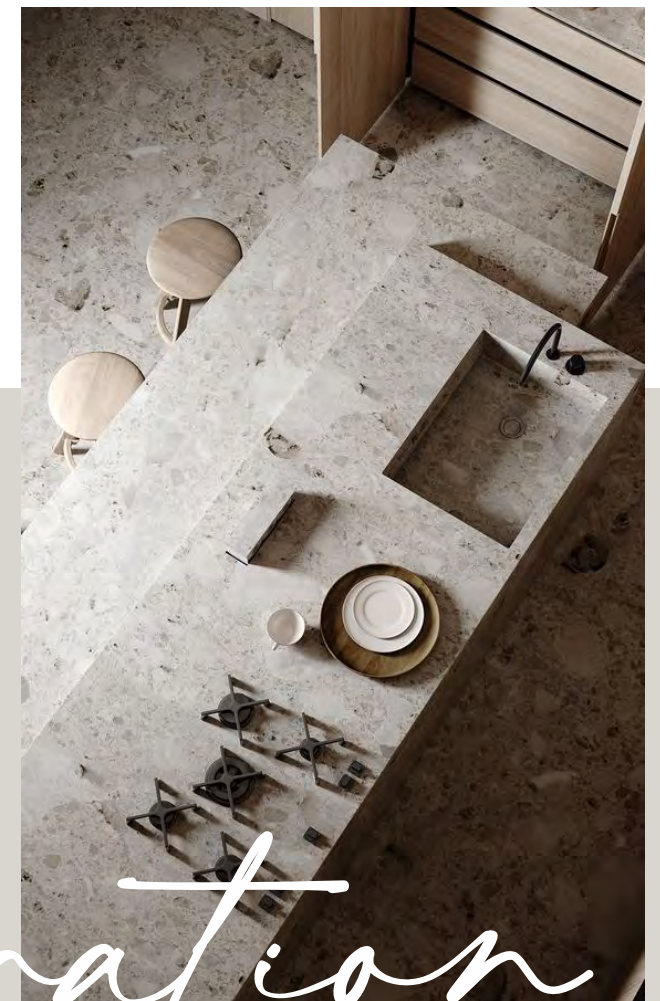
KITCHEN DESIGN

In crafting the kitchen space, our aim was to strike a balance between functionality for events and maintaining the cozy ambiance of the home. Thus, we opted for a generously sized, home-style kitchen boasting a large u-shaped island, offering ample prep and serving space along with additional seating for guests.

Equipped with two ovens, a microwave, two dishwashers, a fridge, and a freezer, the kitchen is fully outfitted to meet the demands of hosting gatherings with ease. To further enhance convenience, the open-living area features a separate coffee station and bar area, catering to guests' varied needs.

A focal point of the design, a large-scale terrazzo countertop was chosen to seamlessly tie in with the stone concept, adding visual interest while maintaining cohesion with the overall aesthetic. Timber cabinetry and soft lighting were carefully selected to infuse the space with warmth and charm, ensuring that the kitchen remains both functional and inviting for all who gather within.

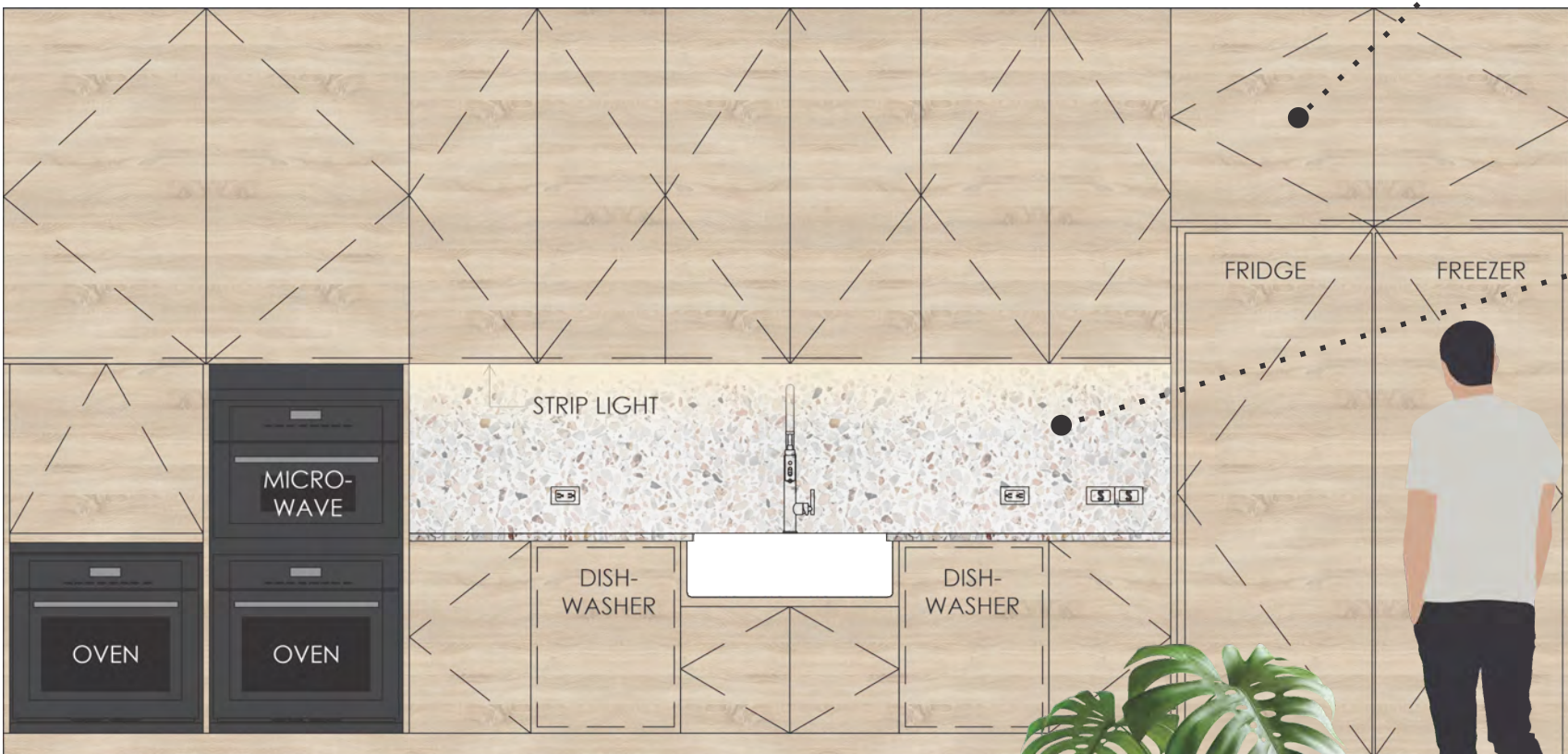
DESIGN



inspiration



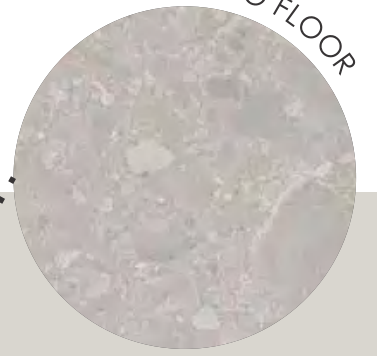
TIMBER CABINETS



STONE COUNTER TOPS



TERRAZZO FLOOR



FRONT ELEVATION

DESIGN





DESIGN





DESIGN





GREAT ROOM DESIGN

The expansive living and dining area on the lower level serves as the cornerstone of the home's entertainment hub. Thoughtfully designed to accommodate a significant number of guests, it effortlessly transitions between hosting large family dinners and intimate events with ease.

Carefully curated furniture pieces take center stage, showcasing natural finishes and elements that imbue the space with a sense of warmth and authenticity. Emphasizing textures that evoke a relaxed and earthy ambiance, each furnishing harmonizes seamlessly with the overall aesthetic, enriching the atmosphere with its natural allure.

DESIGN



Mood



DESIGN









JANINE EVERY

DINING DESIGN

The expansive dining table, capable of accommodating up to 14 guests, stands as the epitome of an entertainer's dream. Elevating the dining experience are statement pieces that adorn the room, including two striking straw lights, complemented by rattan dining chairs and captivating rusted bell wall art.

To further enhance the ambiance and infuse the space with personality, two remarkable island-inspired black-and-white custom-made art pieces were commissioned by Janine Every, serving as focal points on the expansive walls of the kitchen and dining room. These unique artworks not only add visual intrigue but also contribute to the overall aesthetic, imbuing the space with a sense of charm and sophistication.



Mood



DESIGN





DESIGN





GAME ROOM DESIGN

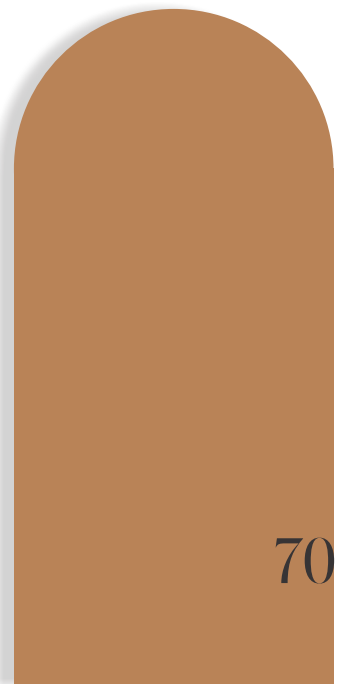
A secondary lounge was conceived as a dedicated entertainment space, primarily catering to the younger members of the household. Here, children can indulge in movie nights or engage in playful games, fostering an environment of leisure and amusement.

Furnished with comfortable seating, the lounge exudes a welcoming atmosphere enhanced by warm hues and cozy textures. Designed to promote relaxation and enjoyment, this intimate space provides the perfect retreat for unwinding and engaging in leisure activities with family and friends.





Mood



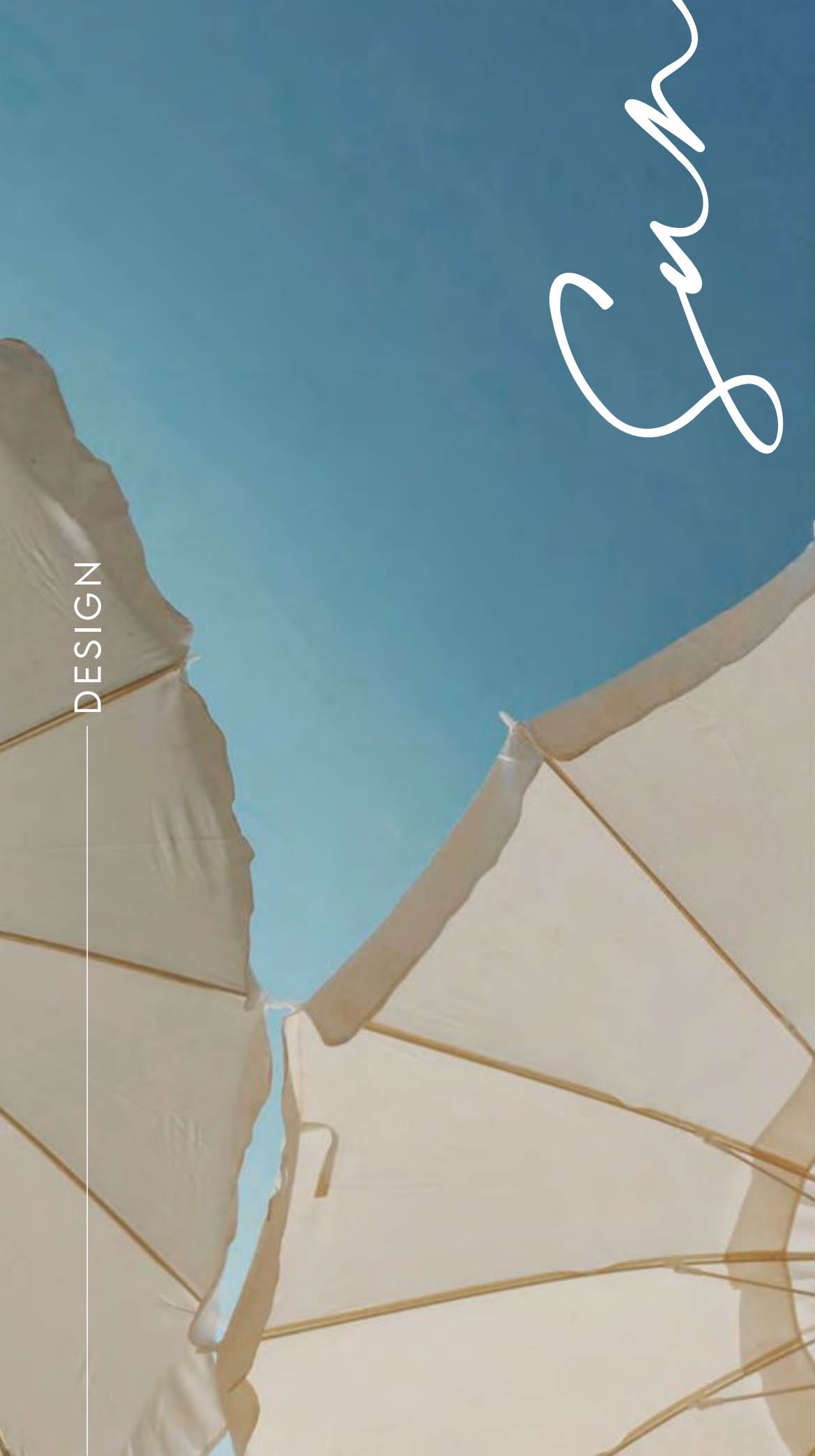


LEATHER'S PLAY



DESIGN

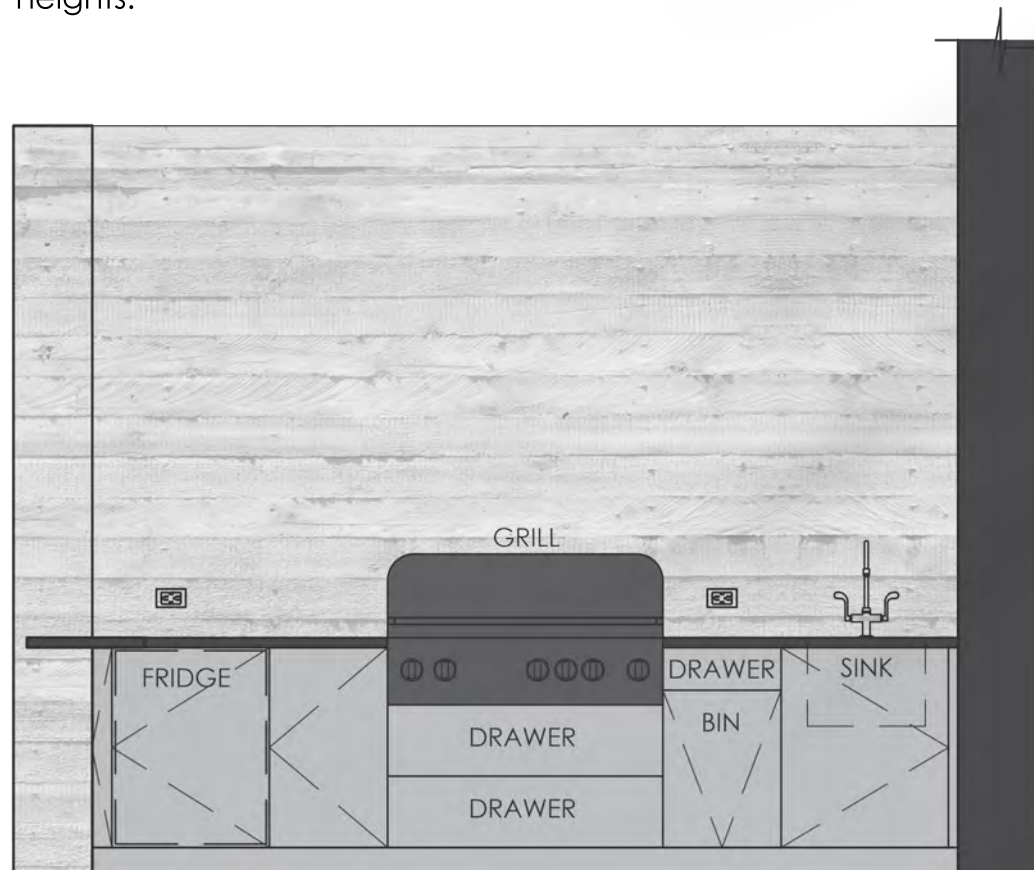
Summer



TERRACE DESIGN

The covered terrace seamlessly extends the interior living space, offering an expansive entertainment area for gatherings of all sizes. Here, guests can enjoy a multitude of amenities, including a summer kitchen for barbecuing, a sunken fire pit for cozy evenings, and a large pool and spa for refreshing dips and relaxation. A spacious lawn dotted with various lounging areas adds versatility to the outdoor space, catering to diverse activities and creating unique experiences for all.

Central to the outdoor oasis is the inviting pool, accompanied by an island-style spa, beckoning guests to immerse themselves in the tranquil surroundings. The presence of a glass window at the rear of the pool not only provides a seamless view of the ocean but also fosters a continuous connection to the natural beauty of the landscape, elevating the ambiance of the outdoor area to new heights.



SUMMER KITCHEN



DESIGN





DESIGN





DESIGN





KIDS BEDROOM DESIGN

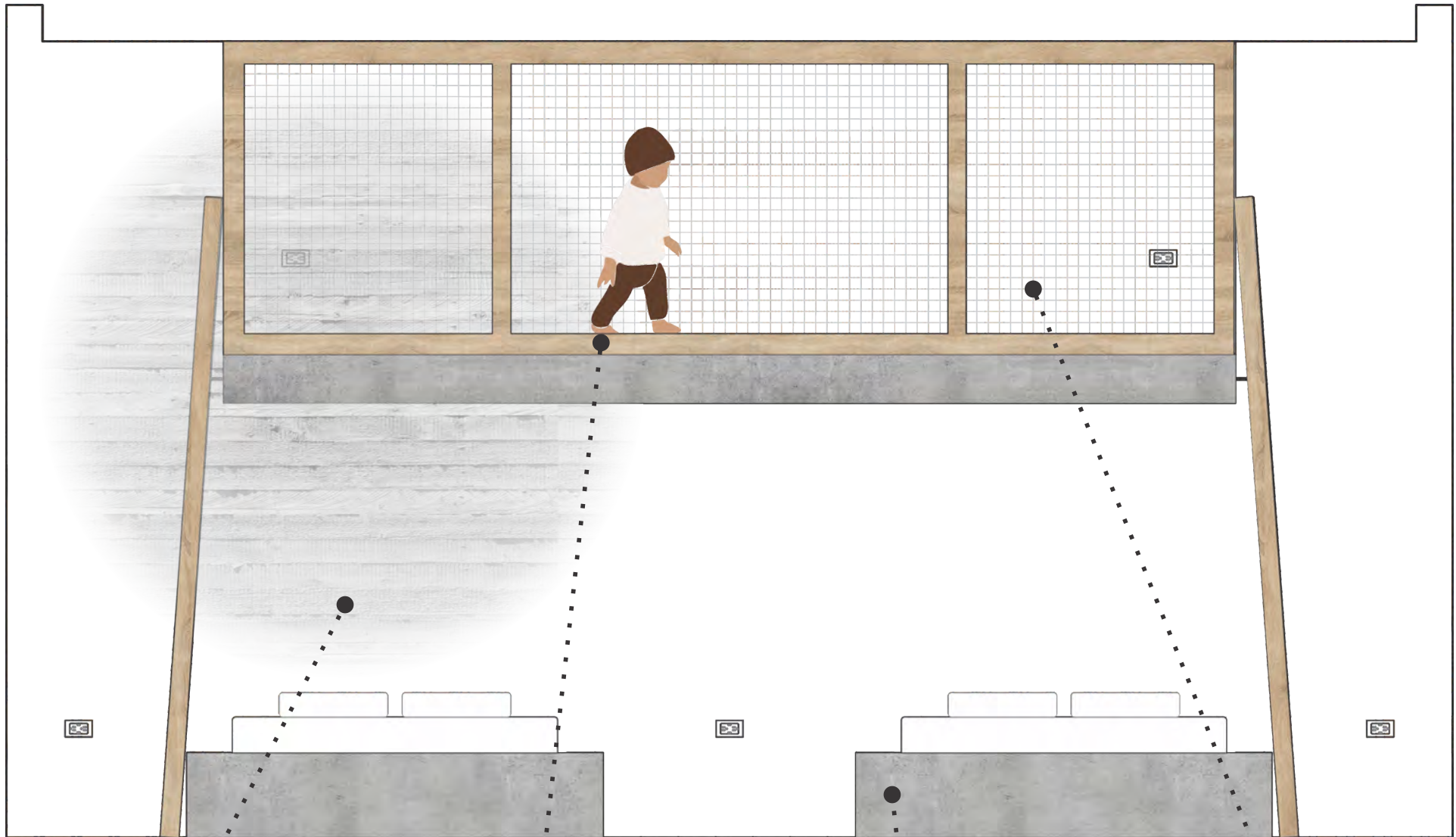
Our objective was to craft a bedroom for children that would spark their imagination and ignite a sense of adventure from the moment they entered. To bring this vision to life, we conceived distinctive floating concrete bunk beds, featuring an innovative netted rope balustrade on the top bunk. This playful design element not only adds a touch of whimsy to the room but also encourages children to embark on imaginative journeys, fostering a space where creativity thrives and cherished memories are made.

DESIGN

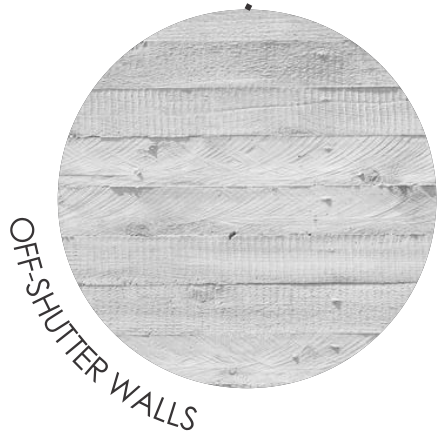


inspiration





FRONT ELEVATION



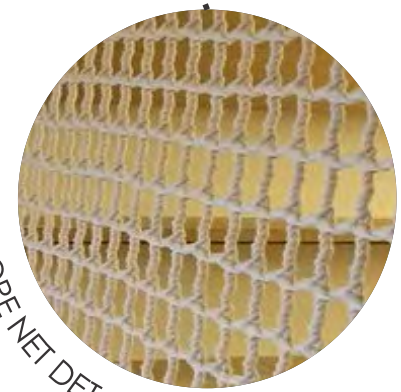
OFF-SHUTTER WALLS



TIMBER ACCENTS



CONCRETE BED BASE



ROPE NET DETAIL

DESIGN





DESIGN



Inspiration





PRIMARY BEDROOM DESIGN

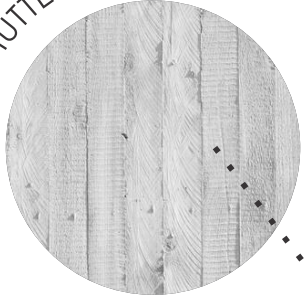
The primary bedrooms and en-suite bathrooms were meticulously designed to provide a serene sanctuary reminiscent of a luxury hotel experience. A standout feature is the floating island bed, expertly crafted from concrete to offer unobstructed panoramic ocean views. The low sightline while lying in bed creates a captivating illusion of being surrounded by water, enhancing the tranquil ambiance of the space.

Each room boasts an off-shutter concrete feature wall, inviting tactile exploration and adding depth to the design. Thoughtfully positioned behind the headboard, the desk and coffee station ensure uninterrupted ocean vistas, allowing guests to immerse themselves fully in the breathtaking scenery.

The juxtaposition of raw concrete and stone materials against the soft linen and timber textures creates a harmonious blend of elements.

DESIGN

OFF-SHUTTER WALLS



TIMBER ACCENTS

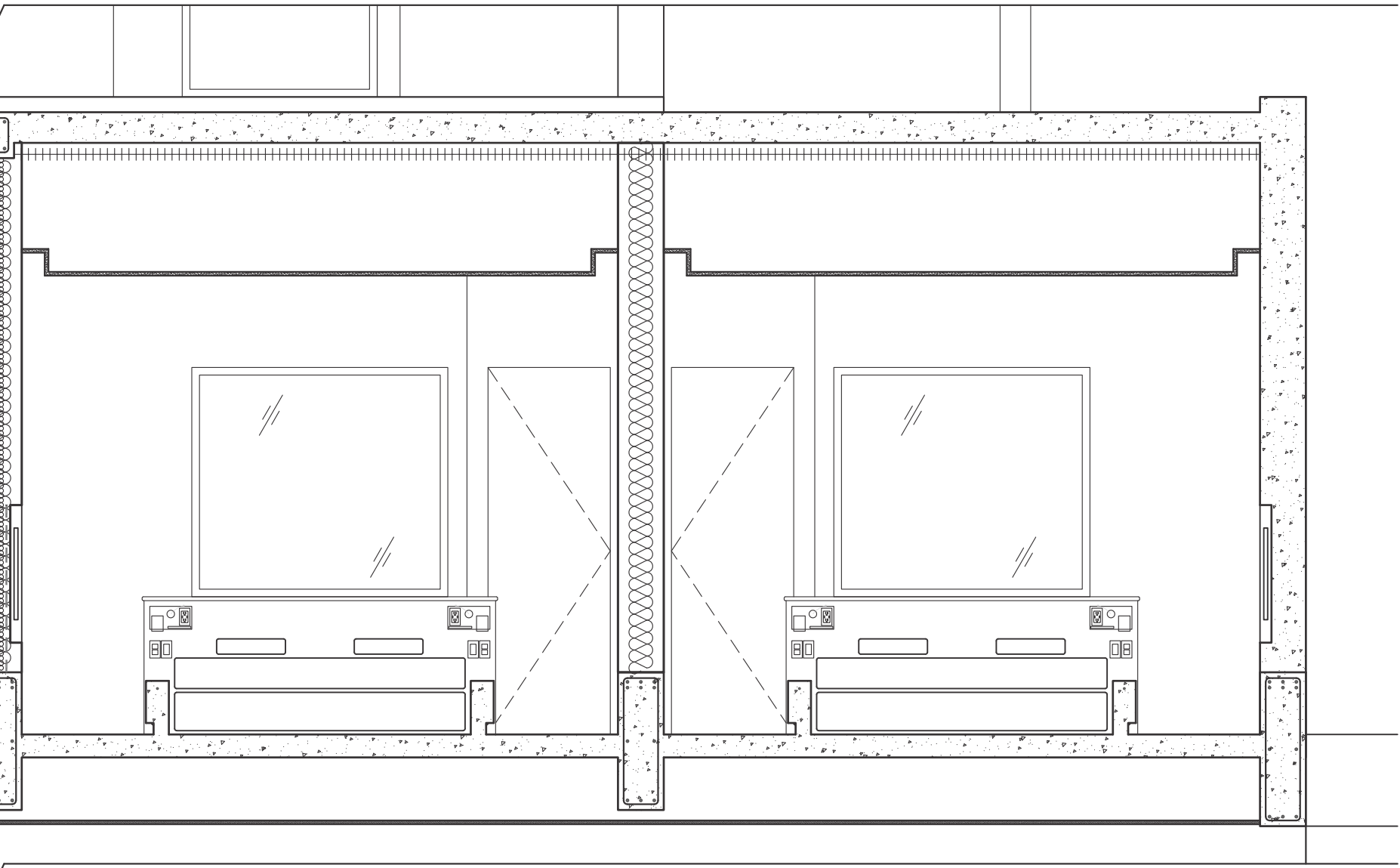


PAINTED WALL



CONCRETE BED BASE





PRIMARY BEDROOMS
SECTION

DESIGN







DESIGN



DESIGN





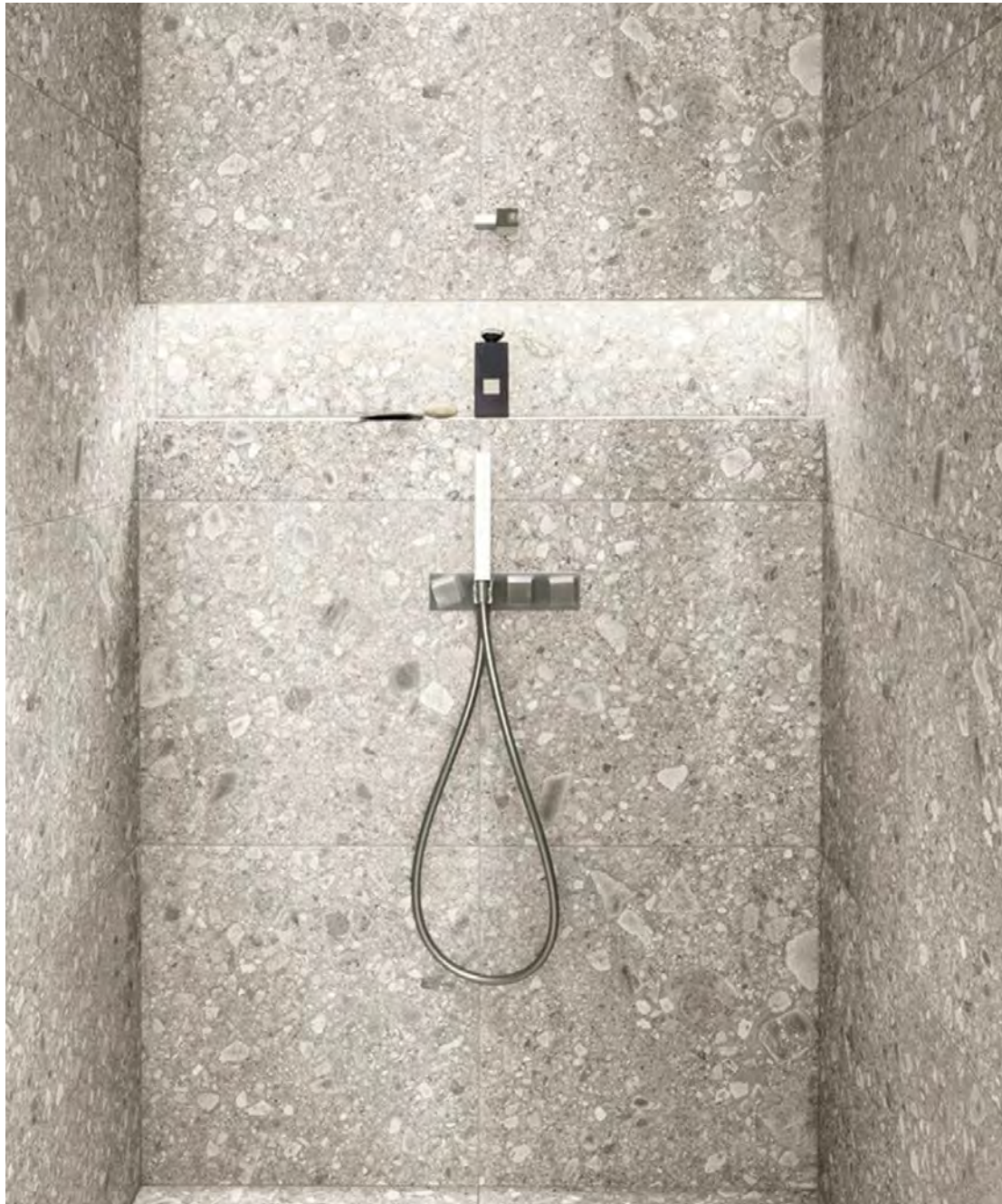
DESIGN





DESIGN





BATHROOM DESIGN

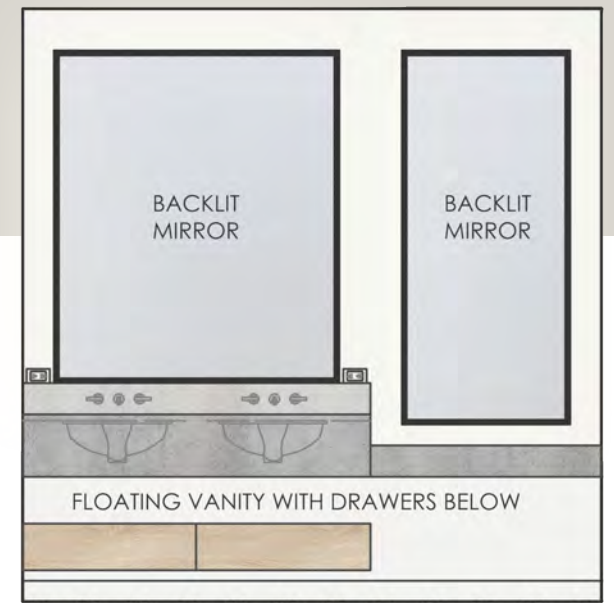
In the en-suite bathrooms of the primary bedrooms, expansive glass shower windows offer captivating ocean vistas, seamlessly integrating the surrounding natural beauty into the space. This innovative design not only immerses guests in the serene seascape but also provides an invigorating shower experience, rejuvenating amidst the coastal splendor.

Elegantly adorned with terrazzo and pebble tiles, the bathrooms exude sophistication while harmonizing with the rocky surroundings. These luxurious finishes elevate the tranquil spaces, infusing them with refinement and serenity that perfectly complement the awe-inspiring views.

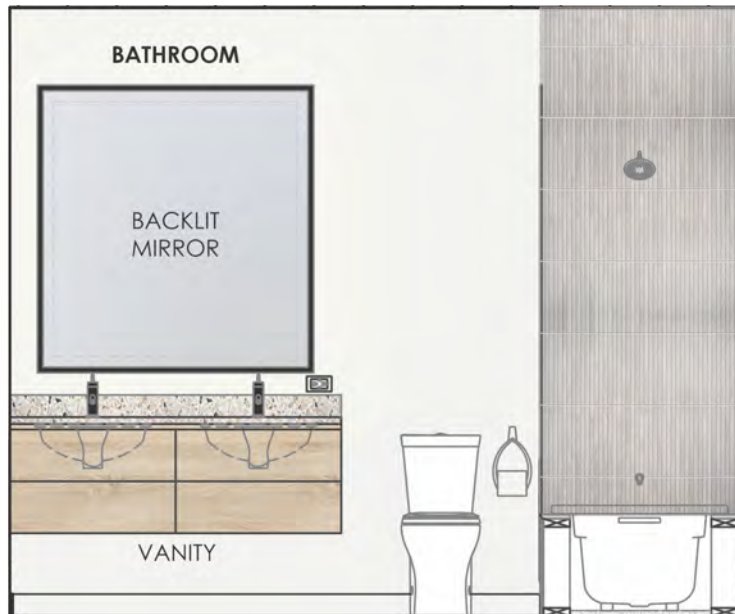
Furthermore, the primary bathroom features an outdoor shower, enveloped by caymanite stones excavated from the site, offering an immersive experience in nature.

While the remaining bathrooms share a similar style, each possesses its own unique stone feature tile, adding individual character and charm to every space.

DESIGN



PRIMARY EN-SUITE ELEVATIONS



KIDS EN-SUITE ELEVATIONS



materials

DESIGN

Primary Suite





DESIGN





DESIGN





DESIGN



Outdoor showers





DESIGN

Kids





DESIGN



Quest by





DESIGN



POWDERER ROOM



02.

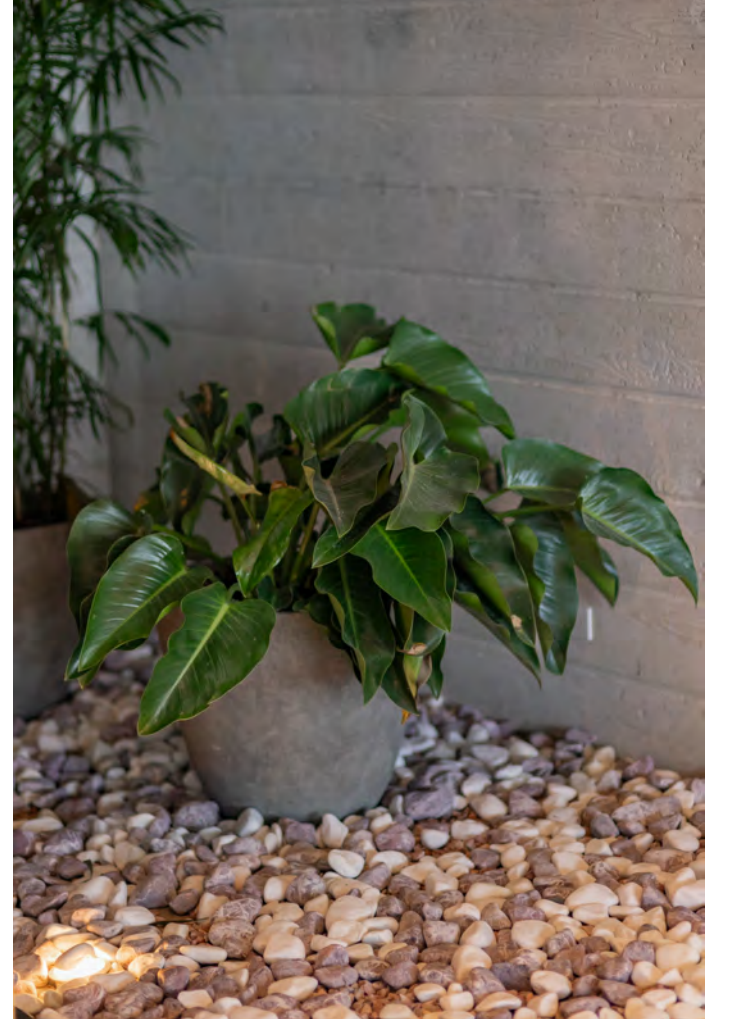
IMPORTANT ELEMENTS

SENSITIVITY

Mike's keen sensitivity to the surrounding landscape and nature played a pivotal role throughout the design process. It was paramount for the home to seamlessly integrate with its natural environment, leading to its construction nestled into the rock. Likewise, in crafting the interior spaces, our objective was to extend the outdoor ambiance indoors by selecting materials that either mirror or emulate the natural surroundings, all while honoring the traditional Caribbean-style interiors of the island. This approach ensured a harmonious blend between the home's exterior and interior, creating a cohesive and immersive living experience that celebrates the beauty of its coastal setting.









DESIGN



UNIQUE EXPERIENCE

Truly unparalleled, this home distinguishes itself from typical residences with its unparalleled experience. Its unique qualities render it a standout choice as a rental property, offering guests an extraordinary stay that transcends the ordinary. From its innovative architectural design to its thoughtfully curated interior spaces, every aspect of this home promises a one-of-a-kind retreat that leaves a lasting impression on all who have the privilege of experiencing it.





DUAL PURPOSE

With its exquisite primary bedrooms and expansive indoor and outdoor entertainment areas, this home is perfectly suited for a variety of purposes. Whether it's hosting a luxurious family vacation retreat or providing an intimate venue for small events, the versatility of this space ensures it can cater to diverse needs and occasions. From relaxing by the pool to gathering for al fresco dining, every corner of this exceptional property offers an opportunity for unforgettable experiences and cherished memories.

DESIGN



vacation stay

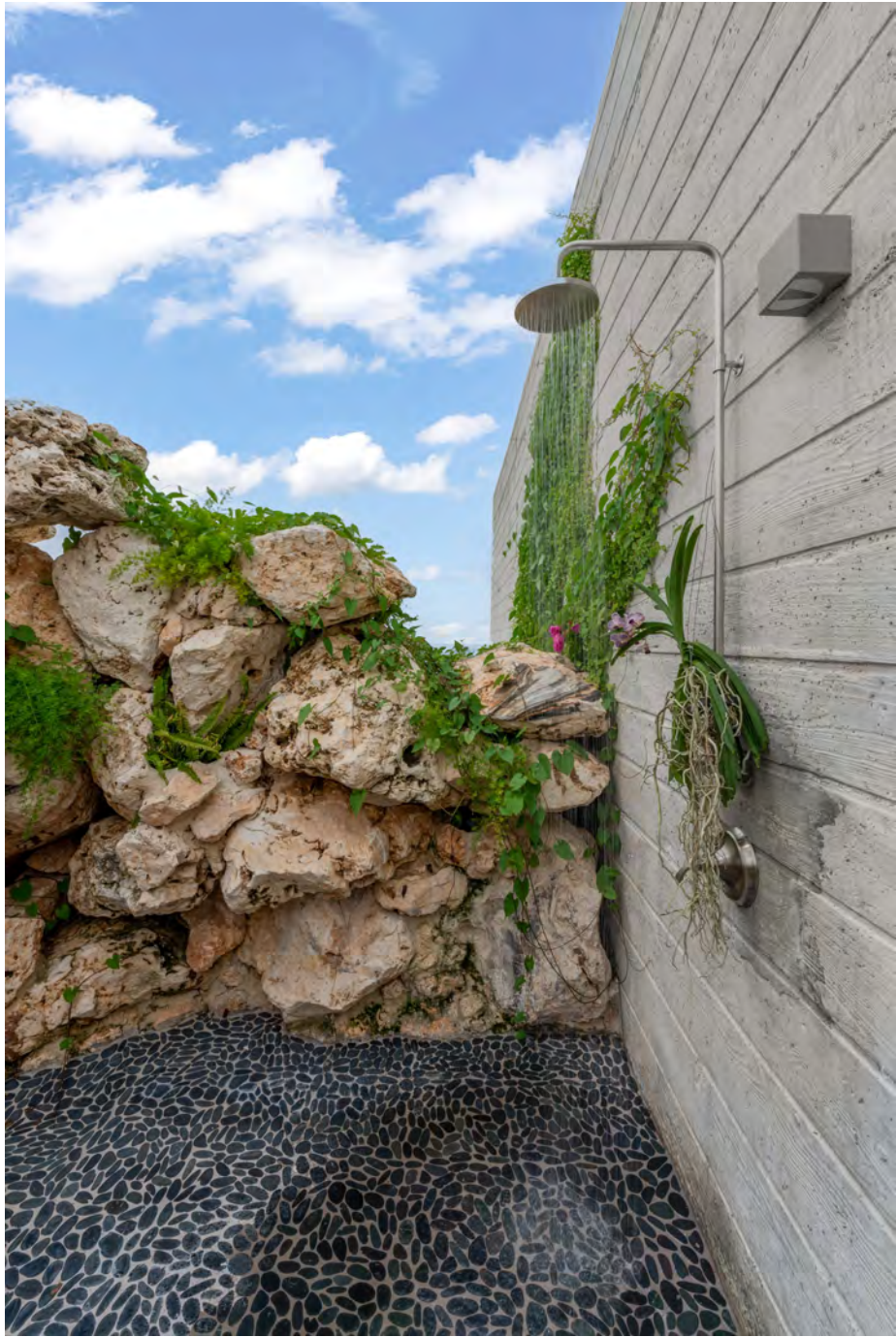




DESIGN

every space







CONNECTION WITH NATURE

At the heart of our design ethos lies a steadfast dedication to nurturing a profound bond with the natural world. This ethos is realized through a deliberate fusion of elements such as indoor greenery, organic materials, and strategic positioning of windows to frame captivating outdoor vistas, thereby seamlessly blending the surrounding environment into our architectural compositions.

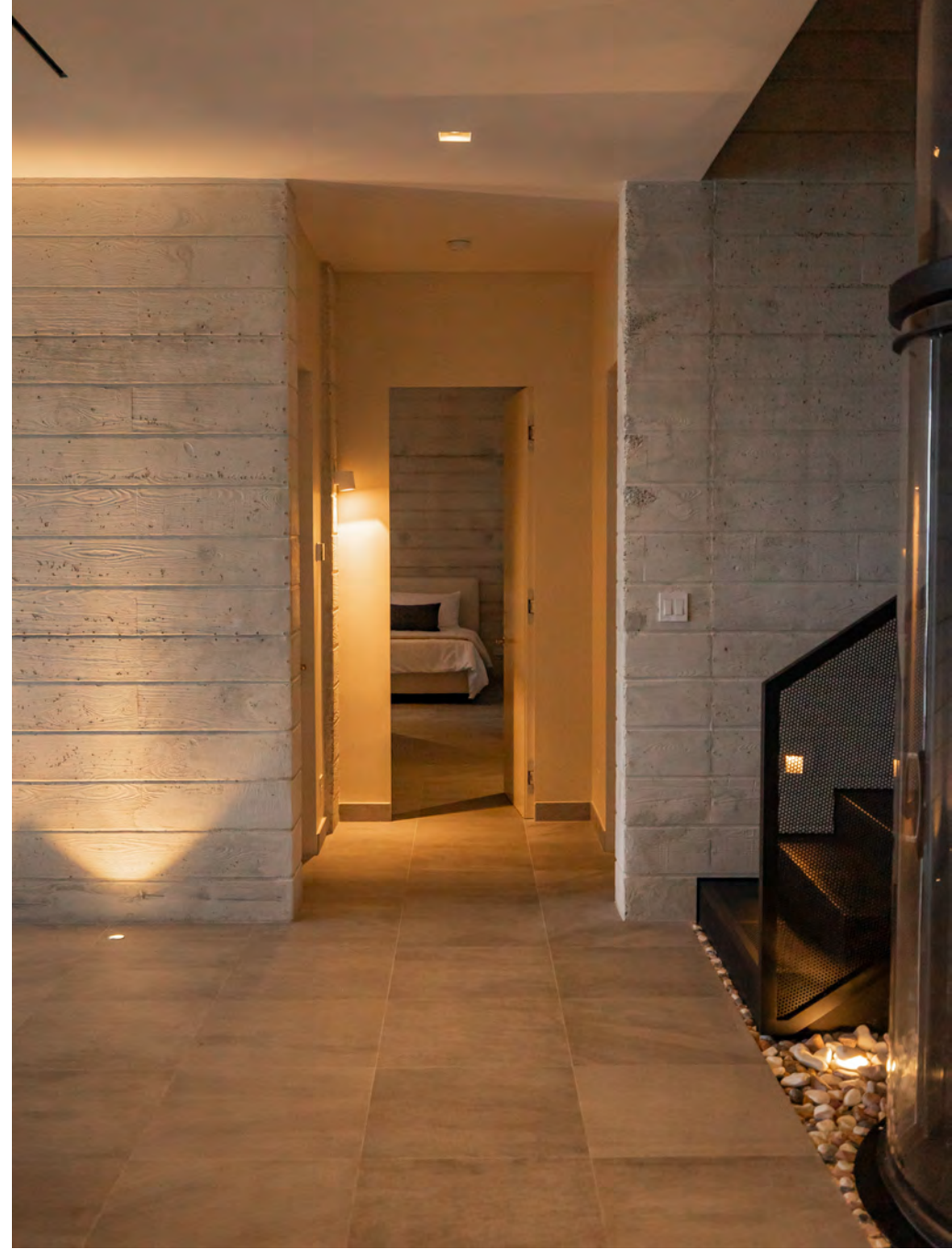
During the excavation process, serendipity led us to the discovery of caymanite, a captivating rock formation boasting intricate layers when polished. Leveraging the inherent beauty of this natural marvel, we repurposed the caymanite rock to fashion boundary walls along the exterior and to create an enclosed outdoor shower wall nestled within the rocky terrain.

Strategically positioned large windows punctuate the open-living area, bedrooms, and primary shower, inviting the tranquil ocean panoramas indoors. This intentional design element not only fosters an uninterrupted connection with the outside realm but also amplifies the overall integration of nature into the fabric of the home's design, resulting in a harmonious interplay between the built environment and the surrounding landscape.

LIGHTING & ATMOSPHERE

Another cornerstone of our design ethos is purposeful lighting design. Every light fixture is meticulously positioned with intention, whether it's to accentuate a material or object, create ambiance, or provide illumination for specific tasks. Our aim was to imbue the space with a sense of moodiness, drama, and ambiance, achieved through the strategic interplay of light and shadow. By thoughtfully considering the placement and type of lighting throughout the home, we curated an atmosphere that captivates the senses and enhances the overall experience of the space.





Ahama

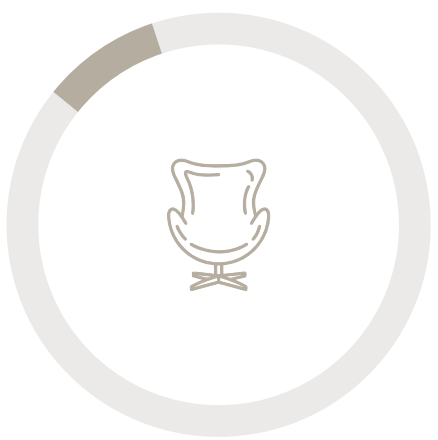




03.

UTILIZATION OF BUDGET

Approaching the design process with meticulous care, we endeavored to achieve the optimal outcome while remaining mindful of costs. Carolina employed a minimalistic approach, allowing the inherent beauty of the materials, views, and unique design features to take center stage without overwhelming embellishment. This strategy enabled us to stay within budgetary constraints and avoid overcapitalizing our investment while still crafting a breathtakingly luxurious home that surpasses expectations.



10%

FURNITURE & DECOR



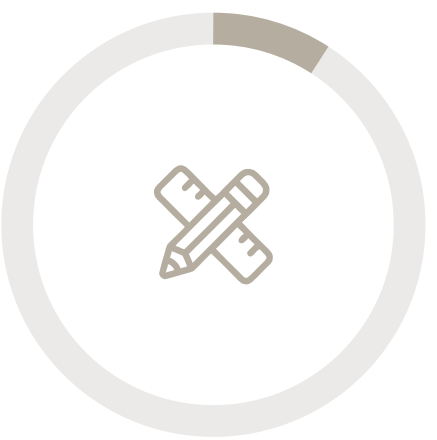
40%

MILLWORK & FINISHING



40%

CO-ORDINATION FEE



10%

INTERIOR DESIGN FEE

04.

SAMPLE
BOARDS

DESIGN





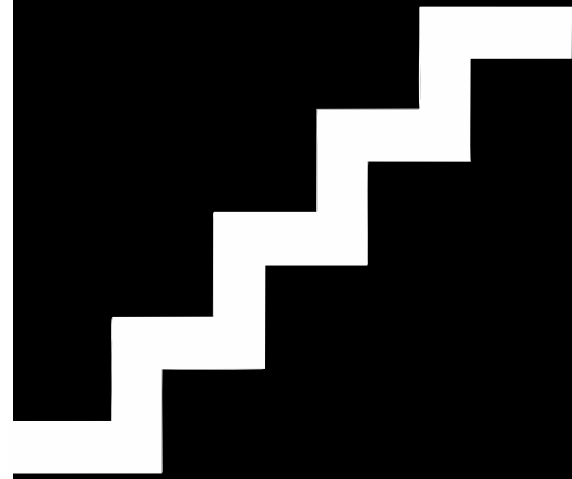
DESIGN





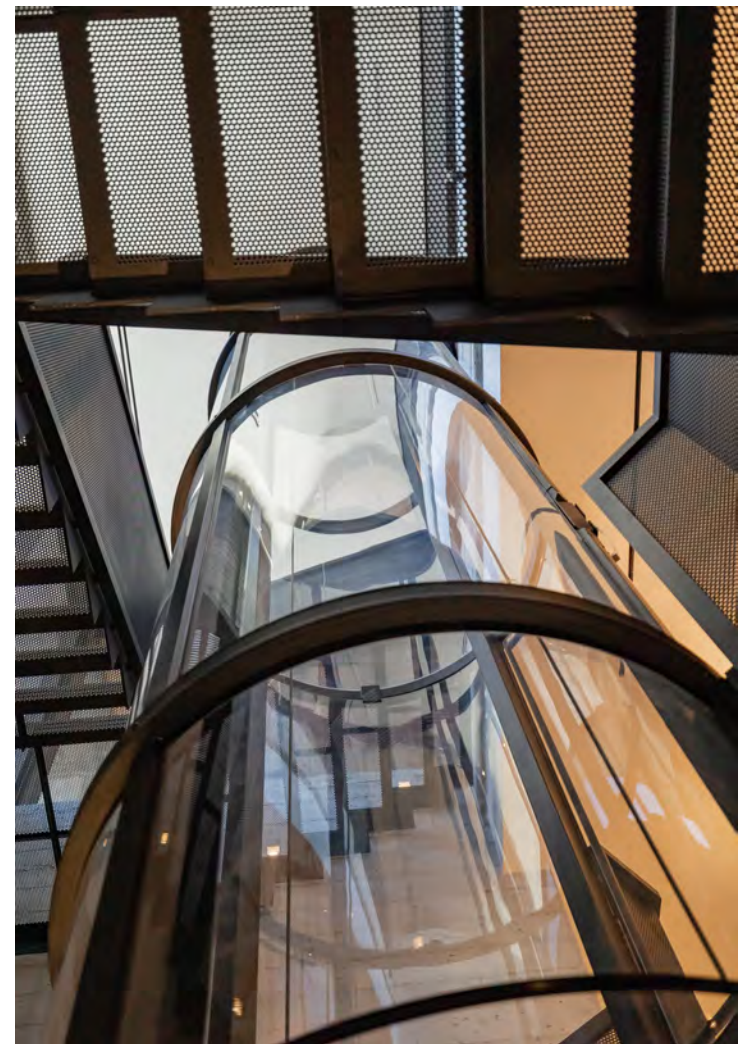
05.

PORTFOLIO
OF PHOTOS



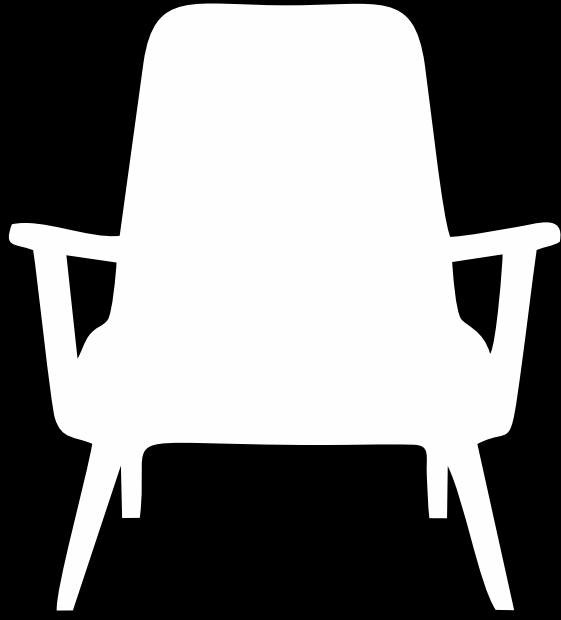
ENTRY AND CIRCULATION

ALL 3 LEVELS





DESIGN

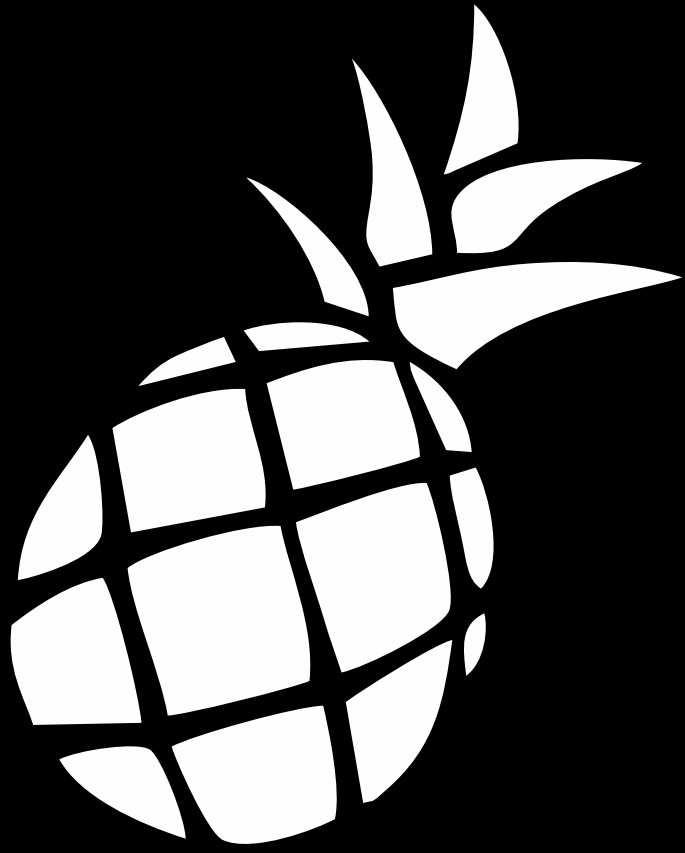


GREAT ROOM
1ST LEVEL





DESIGN

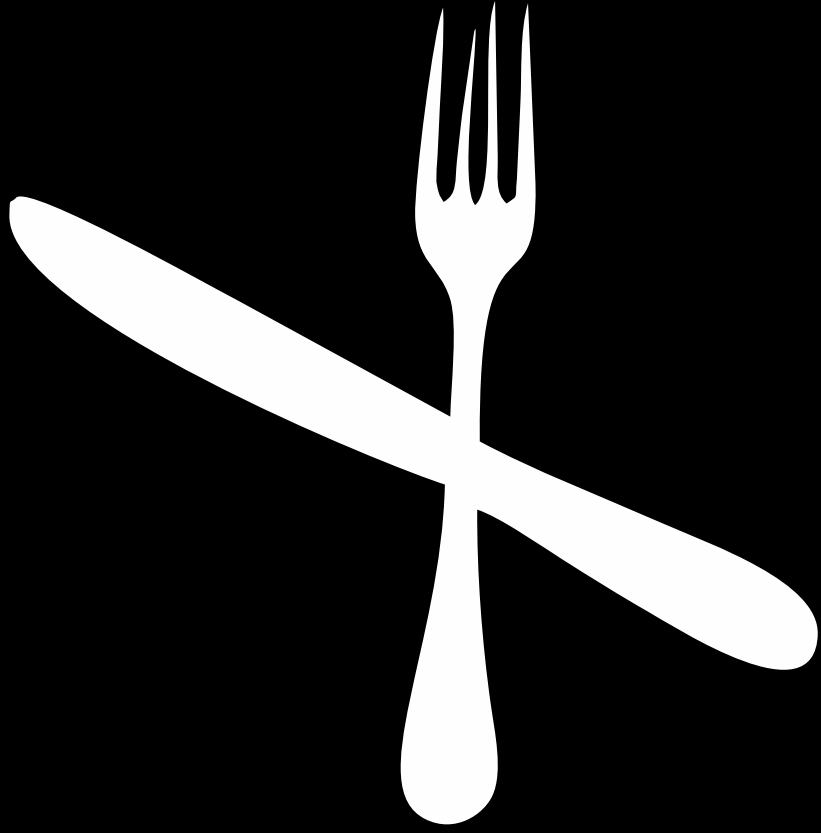


KITCHEN
1ST LEVEL





DESIGN

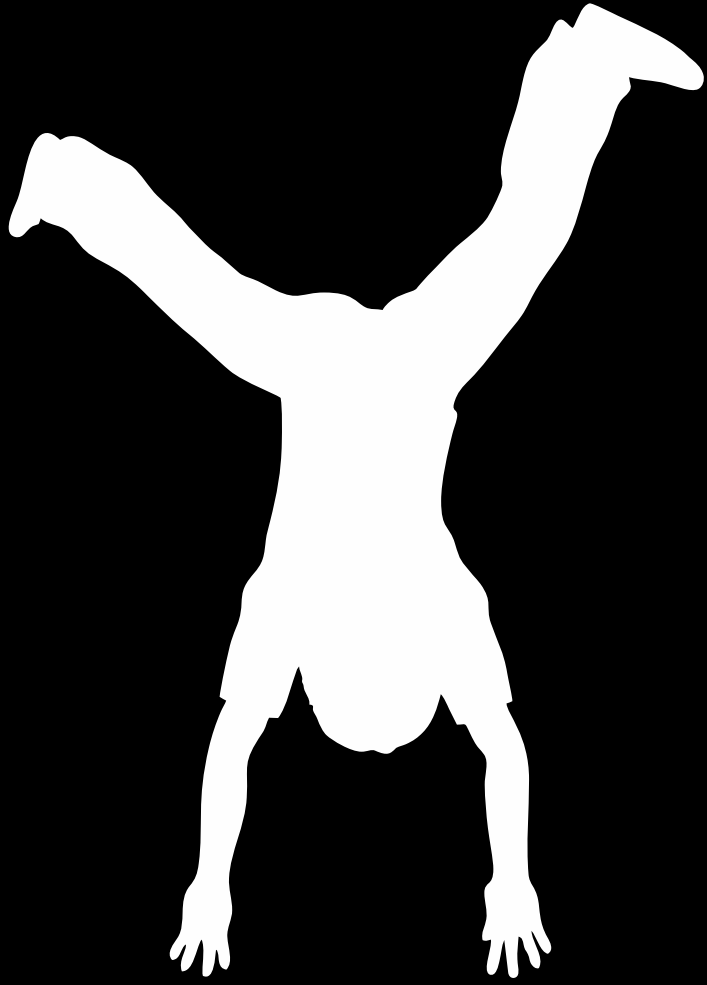


DINING ROOM
1ST LEVEL





DESIGN



BED & BATH
1ST LEVEL





DESIGN



TERRACE & POOL
1ST LEVEL





DESIGN

Z

Z

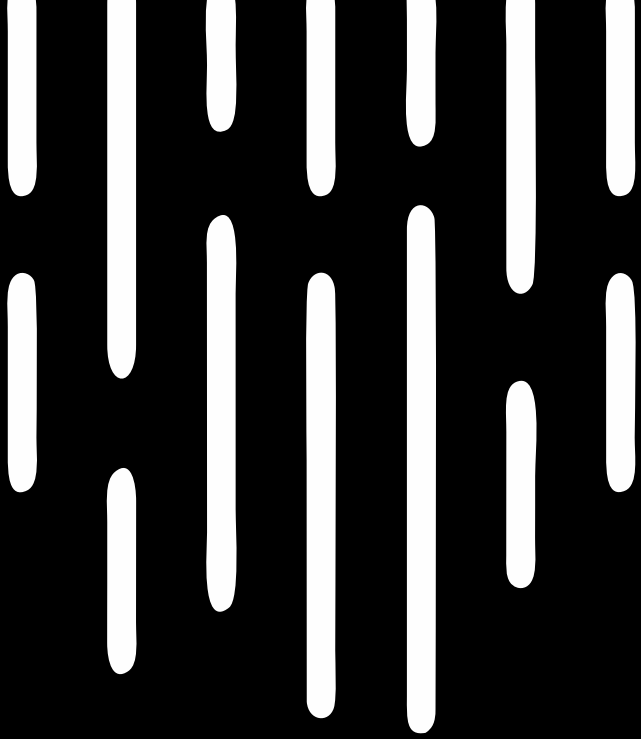
Z

PRIMARY BEDROOMS
2ND LEVEL

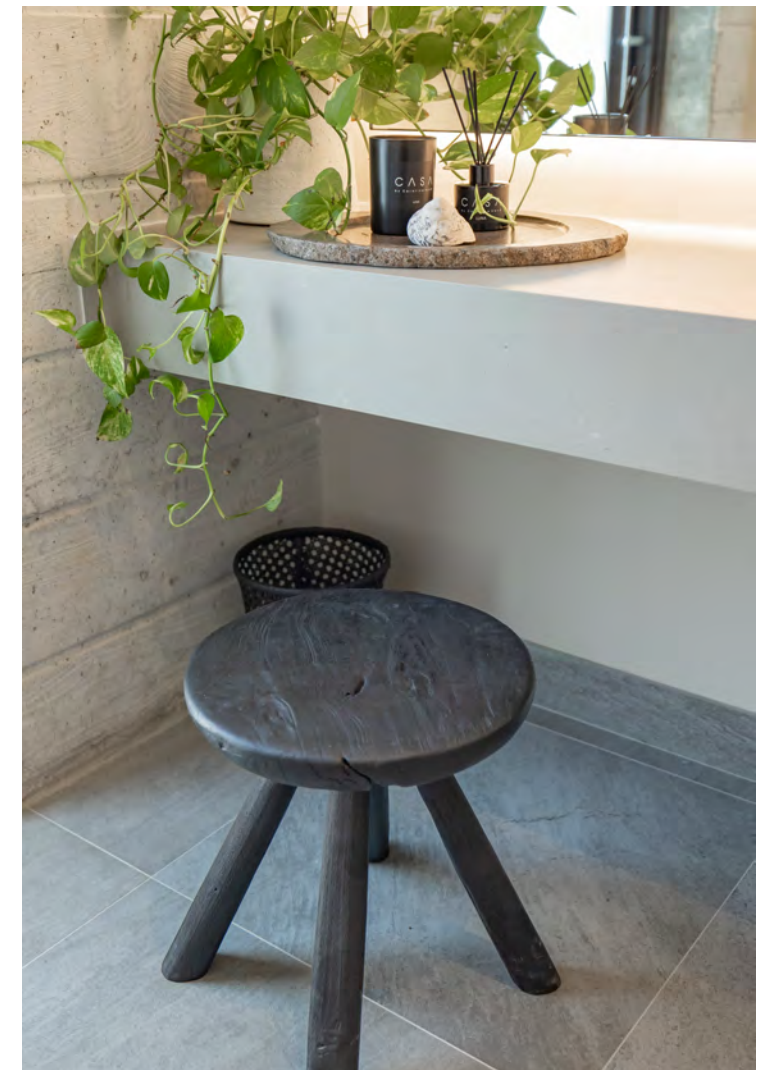
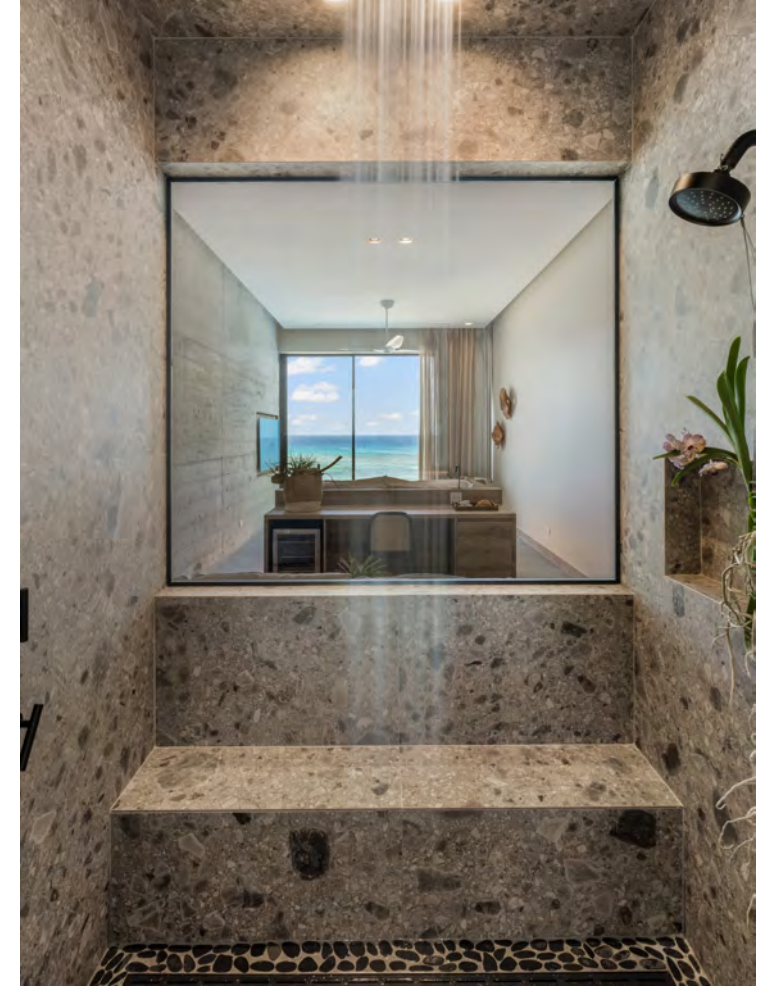




DESIGN



PRIMARY BATHROOM
2ND LEVEL





DESIGNED
WITH
PASSION

BY

Trio



TRIO
ARCHITECTURE
INTERIOR DESIGN
ENGINEERING



